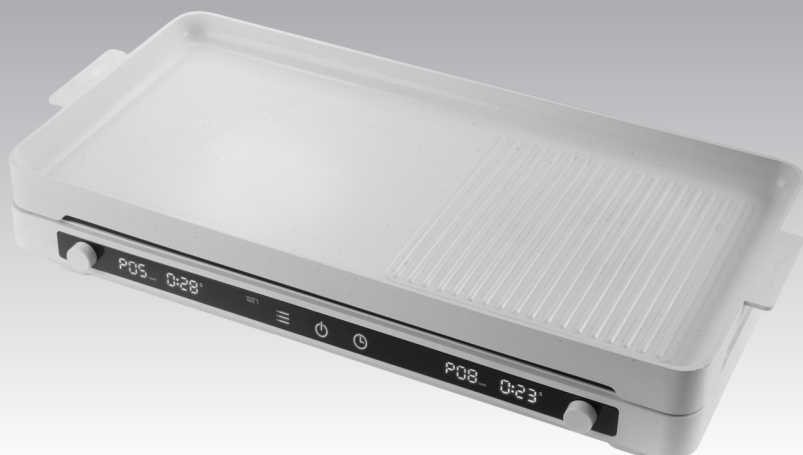


## Compact Double Hob Induction Cooker With Grill Pan

GIC-KD28T



Online Warranty Registration



Please read these instructions and warranty information carefully before use and keep them handy for future reference.

# USER MANUAL

# Table of Contents

---


Warnings & Safety Precautions	03
Product Structure	04
Operation Instructions	05
Cleaning & Maintenance	08
Troubleshooting	09
Technical Specification	10
Warranty Terms & Conditions	19

# Warnings & Safety Precautions

---

## **WARNING!**

Read all instructions carefully before using this product.

- This product is for domestic indoor use only. If this product is used for any commercial, industrial, rental or other purposes, product warranty will be VOIDED.
  - This product is not intended for use by children or persons with reduced physical, sensory or mental capabilities, or lack of experience and knowledge, unless they have been given supervision or instruction concerning use of this product by an adult responsible for their safety.
  - Mind your children and DO NOT let children play with this product.
  - Cleaning and user maintenance shall not be made by children without supervision.
  - Check the voltage indicated on the rating label before using this product.
  - If the supply cord is damaged, it must be replaced by the manufacturer, its service agent or similarly qualified persons in order to avoid hazards.
  - Unplug this product from the power source before cleaning and maintenance.
  - Contact German Pool authorized service technician for repair or maintenance of this product.
- 
1. When this product is working, there will be a weak induced magnetic field around it. Although testing indicates this product is not dangerous for people who wear pacemakers in line with the standard, it is recommended to consult your doctor before using this product if you wear a pacemaker.
  2. DO NOT place any metal objects in addition to the heating pot on this product, such as knives, forks, spoons and pot lids should not be placed on the surface of the cooking area, because they may be heated.
  3. DO NOT put this product on the iron table or household appliances (such as iron cabinets, sterile cupboards, freezers, etc.). For canned food, user must open the lid before heating it to avoid dangerous expansion.
  4. DO NOT insert wire or other foreign bodies into the exhaust port and suction port to avoid electric shock.
  5. DO NOT put this product in a high temperature environment. Keep this product away from the fire source.
  6. This product must be reliably grounded. DO NOT use gas pipeline or water pipeline for grounding purposes. DO NOT use this product for other purposes.
  7. After using this product, DO NOT touch the heating area of the cooker surface with your hands, as the temperature of the heating area will be high due to the influence of the high temperature of the pot. When the surface of the product is hot, LED display will show "H".
  8. Should this product show any abnormality, such as when the power line is damaged, in order to avoid danger, it must be replaced by the manufacturer, its maintenance department or similar departments of professionals. Users are not allowed to replace and disassemble by themselves, otherwise the warranty will be voided, and our company will not be held responsible for any safety accidents incurred.
  9.  **WARNING!** If this product's surface is cracked, turn off this product to avoid possible electric shock.

# Warnings & Safety Precautions

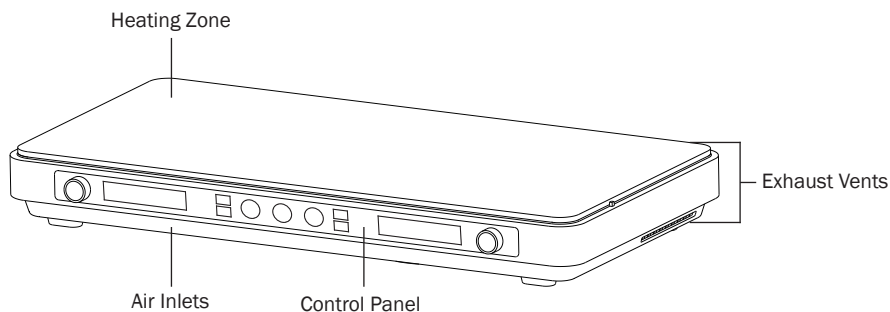
---

10. After using this product, user must pull out the plug or turn off the switch at the socket.
11. The silicone pot holders must be removed when the product is heating, they are only for use when moving the grill pan. Remove the pot holders after moving the pan to avoid the pot holders becoming hot and causing scalding.
12. DO NOT place flammable or acidic materials around this product, in order to avoid acid or alkali corroding the circuit in this product and shortening the service life of this product.

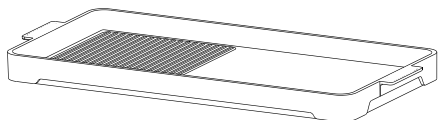
## Product Structure

---

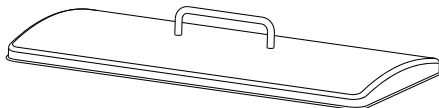
### Main Body



### Grill Pan



### Grill Pan Lid



# Operation Instructions

## Control Panel



Icon		Function
	On/Off Key	Tap key to turn product on and off (return to standby state)
	Mode Key	Tap key to cycle among Keep Warm Mode, Steam Mode and Grill Mode
	Timer Key	Tap key to activate Timer Function. Timer can be set from 1-179 minutes
	Turn Knob	<ul style="list-style-type: none"> <li>Rotate knob to adjust heating level or time</li> <li>During heating, press knob to pause heating, and press again to resume heating</li> </ul>
	Temperature/Level Display	<ul style="list-style-type: none"> <li>When using Steam Mode or Grill Mode, this display shows heat level</li> <li>When using Keep Warm Mode, this display shows keep warm temperature</li> <li>°C represents temperature, Level represents heat level</li> </ul>
	Time Display	<ul style="list-style-type: none"> <li>When using Grill Mode, this display shows the total time the product has been heating</li> <li>When timer is set, this display shows remaining countdown time</li> <li>S represents second, P represents minute</li> </ul>
	Grill Mode Indicator Light	When Grill Mode is selected, this indicator light lights up constant
	Keep Warm Mode Indicator Light	When Keep Warm Mode is selected, this indicator light lights up constant
	Simultaneous Keep Warm Indicator Light	When Keep Warm Mode is selected, this indicator light lights up constant to indicate both hobs are keeping warm at the same temperature simultaneously
	Steam Mode Indicator Light	When Steam Mode is selected, this indicator light lights up constant

## Choosing The Proper Cookware

Select a suitable electromagnetic cookware:

- It is recommended that the cookware has a flat bottom wider than 12cm diameter.
- The bottom of the cookware should not exceed 24cm diameter.
- Cookware must have electromagnetic properties.

# Operation Instructions

Suitable Cookware	Unsuitable Cookware
Iron, electromagnetic stainless steel, cast iron, electromagnetic enamel	Aluminum, glass, copper, ceramic
Cookware with flat bottom	Cookware with flat bottom Cookware with curved or uneven bottom, cookware with feet
Recommended diameter of flat bottom cookware should be 12 – 24cm	Cookware with bottom smaller than 12 cm diameter

## Note:

If unsuitable cookware (non-electromagnetic cookware) is placed on this product's heating zone, LED display will show “—”, and buzzer will beep continuously to alert user; user must replace with a suitable cookware otherwise this product will not operate.

## How To Use

1. When power is connected, buzzer beeps once, the whole control panel lights up for one second then goes dark, On/Off Key blinks, and product enters standby state.
2. Tap On/Off Key to turn on the product, product is set to Grill Mode by default; tap Mode Key to select Keep Warm Mode, Steam Mode or Grill Mode, the corresponding indicator light will light up constant.

	Grill Mode	Keep Warm Mode	Steam Mode
Adjustable Heat Levels	P1/P2/P3/P4/P5/P6/P7/P8	/	C1/C2/C3/C4/C5/C6/C7/C8
Adjustable Temperature	/	100°C/120°C/140°C/ 160°C/180°C/ 200°C/ 220°C/240°C	/

3. After rotating Turn Knob to adjust heat level or temperature, the product will start to heat. When Grill Mode is selected, Time Display will show the total amount of time the product has already been heating; if other modes are selected, Time Display will go dark.

## Note:

- When using Grill Mode or Steam Mode, the two hobs can be separately set to different heat levels.
- When using Keep Warm Mode, the two hobs will keep warm at the same temperature.

## Timer Function

1. In any mode, tap Timer Key to enter Timer Settings, LED display blinks “S”; tap Timer Key again, LED display blinks “M” (S indicates timer countdown in seconds, max. is 9 minutes and 59 seconds; M indicates timer countdown in minutes, max. is 2 hours and 59 minutes).
2. Rotate Turn Knob to set the timer.
3. After setting the timer, Time Display will blink 5 seconds then automatically confirm setting, afterwards it will start displaying the countdown time.
4. To cancel Timer, press Timer Key again, and set Timer to 00.

# Operation Instructions

---

**Note:**

- When using Grill Mode or Steam Mode, the two hobs can be separately set to different timer durations.
- When using Keep Warm Mode, the two hobs can only be set to turn off at the same time.

**Pause Heating**

In any mode, press Turn Knob to pause heating; when paused, Level/Temperature Display will blink. Press Turn Knob again to resume heating.

**Note:**

When Timer Function is on, pressing Turn Knob will pause cooking, and timer countdown will also pause.

**Safety Protection**

1. Electronic Safety Device: This product has a built-in probe that can sense the real-time temperature of the electronic current, when current is overheated, the product will automatically reduce the heating power.
2. Auto Off Function: If the product is turned on but left idle (not cooking) for 2 hours, it will automatically shut off.

# Cleaning & Maintenance

---

## **WARNING!**

- Before cleaning, turn off the power and wait until the product surface has completely cooled down.
- If this product shows malfunction or needs maintenance or repair, disconnect from the power source and contact German Pool Customer Service & Repair Centre. Inspection and repair must be carried out by German Pool authorized technician only. **DO NOT** disassemble this product by yourself.

## **Note:**

- DO NOT use rough cloth, scourge pad or abrasive tool to avoid scratching the glass ceramic.
  - DO NOT use organic solvents or any cleaning products that contain chemicals such as benzene, gasoline, thinner, or corrosive detergent or solvent.
  - DO NOT immerse or splash product directly with water.
1. For general cleaning, wiping with a dry soft cloth is sufficient.
  2. Clean off any stain or food debris on the glass ceramic after each use. Wipe with a moist cloth, then wipe dry with dry soft cloth.
  3. For stubborn stains, clean with a moist sponge with diluted mild detergent, then wipe again with a moist soft cloth followed by a dry soft cloth.
  4. DO NOT use steam cleaner to clean this product.
  5. Avoid scraping your cooking utensil along the glass ceramic in order to avoid causing scratch marks on the glass ceramic (although a scratched glass ceramic will not affect the use of this product).

Over time, the glass ceramic may become discolored due to one of the following situations, and is considered a natural phenomenon. Operation of the product will not be affected:

- Prolonged overheating or burning empty cookware
- Spillage not cleaned off immediately
- Bottom of cookware is not clean



# Troubleshooting

Problem	Possible Cause	Solution
Fan continues to run for a while after product is turned off	Electronic system cooling	This is a normal phenomenon
Product does not operate, display shows error code“E0”	Mains voltage too low	Turn off product, wait till voltage returns to normal then restart product
Product does not operate, display shows error code“E1”	Mains voltage too high	Turn off product, wait till voltage returns to normal then restart product
Product does not operate, display shows error code“E2”	Product surface too hot	Avoid dry burning, and wait till product's heating zone cools down then restart product
	Cooking utensil is dry burning or the utensil is too hot	
Product does not operate, display shows error code“E3”	Product's air inlet is blocked	Clean or unblock air inlet
	Product's fan stopped turning	Contact German Pool Customer Service & Repair Centre
	Product's inside temperature is too high. Check if there is any heat-producing items around the product	Avoid using this product around heat-producing items or when the environment is too hot
Product does not operate, display shows error code“E5”	Glass ceramic temperature sensor malfunction	Contact German Pool Customer Service & Repair Centre
Product does not operate, display shows error code“E6”	Temperature sensor malfunction	Contact German Pool Customer Service & Repair Centre

## **WARNING!**

- The above table shows suggestions of commonly occurring faults and their rectification methods, and is intended strictly for user reference only.
- Should there be any product malfunction or breakdown, to avoid safety hazards and damaging the product, DO NOT repair it yourself. Contact German Pool Customer Service & Repair Centre immediately.

# Technical Specification

---

Model	GIC-KD28T
Voltage / Frequency	220-240 V ~ 50 Hz
Power	2,800 W
No. of Hobs	2
Product Dimensions	(Without Grill Pan) (H) 58 (W) 481 (D) 241 mm
	(With Grill Pan & Lid) (H) 124 (W) 515 (D) 241 mm
Net Weight	(Without Grill Pan) 3.1 kg
	(With Grill Pan & Lid) 6 kg

- Specification is subject to change without prior notice.
- If there is any inconsistency or ambiguity between the English version and the Chinese version, the Chinese version shall prevail.
- Refer to [www.germanpool.com](http://www.germanpool.com) for the most update version of the user manual.

# 目錄

---

警告及注意事項	12
---------	----

產品結構	13
------	----

使用說明	14
------	----

清潔與保養	16
-------	----

故障檢修	17
------	----

技術規格	18
------	----

保用條款	19
------	----

# 警告及注意事項

## ⚠ 警告！

使用本產品前，請仔細閱讀所有說明。

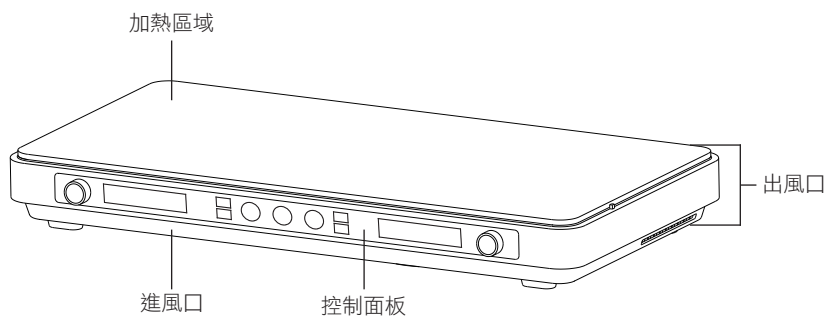
- 本產品只限家居室內日常使用，如產品作任何商業、工業、出租或其他用途，保用證即告失效。
- 請勿讓兒童或身體有殘障、精神不健全及對本產品缺乏經驗或知識的人士單獨使用本產品；如需使用，必須要在負責任的成年人監管下方可使用。
- 應照顧好兒童，確保他們不會玩耍本產品。
- 無成年人監管下，勿讓兒童清潔及維護本產品。
- 使用前，請先檢查所有電壓是否與本產品標籤上的電壓相符。
- 如果電源線損壞，為免發生意外，電源線必須由廠方、廠方指定的維修中心或同等合格的技術人員進行更換。
- 清潔或檢查本產品前，必須先關機及拔掉插頭。
- 請聯繫德國寶授權的技術人員進行維修或保養本產品。

1. 本產品工作時，其周圍會產生微弱感應磁場，雖然測試顯示本產品對於穿戴符合標準起搏器的人沒有危險，但建議穿戴者要使用本產品，必須先諮詢醫生。
2. 本產品上嚴禁放置除加熱鍋具外的任何金屬物體，如刀、叉、勺和蓋嚴禁放在烹飪區域表面，因為它們可能被加熱。
3. 嚴禁將本產品擺放在鐵製檯面或家用電器上工作（如鐵製櫥櫃、消毒碗櫃、冰櫃等）。罐頭類食品，必須將蓋子打開後再加熱，避免受熱膨脹產生危險。
4. 排氣口與吸氣口嚴禁插入鐵絲等異物，避免觸電。
5. 嚴禁將本產品擺放在高溫環境中使用，遠離火源。
6. 在使用本產品時，電源接地線必須可靠接地，嚴禁利用煤氣管道或自來水接地線，不能用於其他用途。
7. 本產品使用後嚴禁用手觸摸加熱區，因受鍋具的高溫影響，加熱區域溫度高溫，當爐面高溫時，LED屏顯示「H」。
8. 本產品如出現異常情況，如電源線損壞，為避免危險，必須由製造商、其維修部門或類似部門的專業人員更換。用戶嚴禁自行更換拆卸，否則保修失效，如因此產生安全事故，本公司概不負責。
9. ⚠ 警告！如果本產品表面有裂紋，必須關掉本產品以避免可能出現的電擊。
10. 使用完本產品後，必須拔掉插頭或關掉插座處的開關。
11. 矽膠套在加熱中不可使用，只有在拿烤盤時使用，使用後必須把矽膠套拿下來，避免矽膠套燙手。
12. 本產品周圍嚴禁放置易燃物或酸性物品，以避免酸、鹼對本產品中電路的腐蝕，影響壽命。

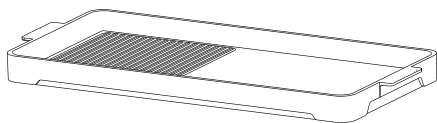
# 產品結構

---

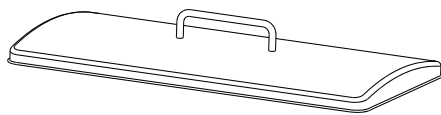
## 主機



## 烤盤



## 烤盤蓋



# 使用說明

## 控制面板



圖標	說明
	開關鍵 按鍵開機或關機（返回待機狀態）
	模式鍵 按鍵循環選擇保溫、蒸煮、煎烤模式
	定時鍵 按鍵啟用定時功能，可設置定時時間為1-179分鐘
	旋鈕 <ul style="list-style-type: none"><li>轉動旋鈕調節加熱檔位或時間</li><li>加熱期間按旋鈕暫停加熱，再按一次繼續加熱</li></ul>
	溫度/檔位顯示 <ul style="list-style-type: none"><li>使用蒸煮或煎烤模式時顯示加熱檔位</li><li>使用保溫模式時顯示保溫溫度</li><li>°C代表溫度，Level代表檔位</li></ul>
	時間顯示 <ul style="list-style-type: none"><li>使用煎烤模式時顯示加熱時間（累計）</li><li>設置定時功能後，顯示倒數關機時間</li><li>S代表秒，M代表分鐘</li></ul>
	煎烤模式指示燈 指示燈常亮代表已選擇煎烤模式
	保溫模式指示燈 指示燈常亮代表已選擇保溫模式
	同步保溫指示燈 指示燈常亮代表使用保溫模式時，雙爐頭同步控制
	蒸煮模式指示燈 指示燈常亮代表已選擇蒸煮模式

## 選擇合適鍋具

選擇合適的導磁鍋具：

- 建議底部直徑12厘米或以上之平底鍋具。
- 鍋具底部直徑不超過24厘米。
- 鍋具必須有導磁功能。

合適鍋具	不合適鍋具
鐵、磁性不銹鋼、鑄鐵、磁性鐵製琺瑯	鋁、玻璃、銅、陶瓷
平底鍋具	鍋底彎圓、凹凸不平、附腳
鍋具底部直徑建議為12厘米至24厘米	鍋具底部直徑小於12厘米

## 注意：

如在本產品加熱區域上放置材質不合適的鍋具（非導磁性鍋具），LED顯示屏會顯示「----」，蜂鳴器持續發出提示聲；放置材質合適的鍋具後，方可正常使用。

# 使用說明

## 使用步驟

1. 接通電源後，蜂鳴器發出提示聲一聲，控制面板全亮 1 秒後熄滅，「開關鍵」慢速閃爍，進入待機狀態。
2. 按「開關鍵」開機，預設為煎烤模式，可按「模式鍵」循環選擇保溫模式、蒸煮模式、煎烤模式，相應指示燈常亮。

	煎烤模式	保溫模式	蒸煮模式
可選檔位	P1/P2/P3/P4/P5/P6/ P7/P8	/	C1/C2/C3/C4/C5/C6/ C7/C8
可選溫度	/	100°C/120°C/140°C/ 160°C/180°C/200°C/ 220°C/240°C	/

3. 扭動旋鈕調節檔位或溫度後，電磁爐自動開始加熱。如使用煎烤模式，時間顯示累計加熱時間；如使用其他模式，時間顯示熄滅。

## 注意：

- 使用煎烤模式或蒸煮模式時，雙爐頭可獨立控制檔位。
- 使用保溫模式時，雙爐頭同步控制保溫溫度。

## 定時功能

1. 在任何模式下，按「定時鍵」進入定時設置，LED顯示屏「S」指示燈閃爍，再次按一次「定時鍵」，LED顯示屏「M」指示燈閃爍（「S」代表以秒倒數，可調節9分鐘59秒；「M」所代以分鐘倒數，可調節2小時59分鐘）。
2. 扭動旋鈕調節定時時間。
3. 設置完成後，時間顯示閃爍5秒後自動確認，然後轉為顯示倒數關機時間。
4. 如需取消定時，再按「定時鍵」，將定時時間設置為00即可。

## 注意：

- 使用煎烤模式或蒸煮模式時，雙爐頭可獨立控制定時時間。
- 使用保溫模式時，雙爐頭同步控制定時時間。

## 暫停加熱

在任何模式下，按旋鈕可暫停加熱，此時檔位/溫度顯示閃爍；再按旋鈕可繼續加熱。

## 注意：

在定時功能下按旋鈕暫停，倒數關機亦將暫停。

## 安全保護

1. 電子安全裝置：本產品內置探頭即時檢測電子線路的溫度，過熱時自動減低加熱功率。
2. 自動關機功能：如在開機2小時內沒有任何操作，本產品將自動關機。

# 清潔與保養

## ⚠ 警告！

- 清潔前必須先關掉電磁爐，並必須待爐面完全冷卻後方可進行清潔。
- 如本產品出現故障或需要維修，先拔除電源插頭，並聯絡德國寶顧客服務及維修中心。檢查及維修必須由德國寶專業維修員進行，嚴禁自行拆卸本產品。

## 注意：

- 嚴禁使用粗糙抹布、百潔布或硬刷清潔本產品，以免刮花玻璃面板。
- 嚴禁使用含苯、汽油、天拿水、腐蝕性化學溶劑或有機性溶劑清潔本產品。
- 嚴禁用水直接沖洗或將機身浸入水中清洗。

1. 日常清潔，以乾軟布抹拭即可。
2. 每次使用後，立即微濕軟布抹掉玻璃面板上的污漬或食物殘渣，再用乾軟布抹乾。
3. 頑固污漬可以沾上稀釋洗潔精的微濕海綿清潔，再用微濕軟布抹拭，最後以乾軟布抹乾。
4. 嚴禁使用蒸氣清潔器清潔本產品。
5. 鍋具底部應避免摩擦玻璃面板，以免劃傷（玻璃面板劃傷不影響本產品的使用）。

經長時間使用後，玻璃面板或會因以下幾種情況會造成變色，實屬正常，不影響電磁爐正常使用：

- 爐面長期過熱或鍋具乾燒
- 湯汁溢瀉後未及時清潔
- 使用的鍋具底部不潔淨



# 故障檢修

故障現象	可能原因	解決方案
關機後風扇持續運作一段時間	電子系統冷卻	屬於正常現象
電磁爐不運作，顯示錯誤代碼「E0」	電源電壓太低	關閉電磁爐，待電壓穩定後再試
電磁爐不運作，顯示錯誤代碼「E1」	電源電壓太高	關閉電磁爐，待電壓穩定後再試
電磁爐不運作，顯示錯誤代碼「E2」	爐面溫度過高	避免乾燒，待電磁爐加熱區域表面冷卻後再重新開機使用
	空鍋乾燒或加熱中的鍋具升溫過高	
電磁爐不運作，顯示錯誤代碼「E3」	電磁爐進風口被堵塞	清潔、去除進風口堵塞物
	電磁爐風扇停轉	聯絡德國寶客戶服務及維修中心
	機內溫度過高，檢查周圍有否發熱器具	避免在發熱器具附近或當環境溫度過高時使用本產品
電磁爐不運作，顯示錯誤代碼「E5」	面板溫度感測器故障	聯絡德國寶客戶服務及維修中心
電磁爐不運作，顯示錯誤代碼「E6」	溫度感測器故障	聯絡德國寶客戶服務及維修中心

## ⚠ 警告！

- 以上為常見故障的判斷與檢查，只供用戶作參考之用。
- 如遇機件故障切勿自行修理，避免發生危險及對機件造成損害，請立即聯絡德國寶客戶服務及維修中心作出適當維修。

# 技術規格

---

型號	GIC-KD28T
電壓 / 頻率	220-240 V ~ 50 Hz
功率	2,800 W
爐頭數目	2
尺寸	(不連烤盤) (H) 58 (W) 481 (D) 241 mm
	(連烤盤及蓋) (H) 124 (W) 515 (D) 241 mm
淨重	(不連烤盤) 3.1 kg
	(連烤盤及蓋) 6 kg

- 產品規格及設計如有變更，恕不另行通知。
- 中英文版本如有出入，一概以中文版為準。
- 本產品使用說明書以[www.germanpool.com](http://www.germanpool.com)網上版為最新版本。

# 保用條款

此保用提供德國寶產品之機件在正常使用下壹年保用(自購買日起計算)。

\* 貴戶須在購機十天內，以下列其中一種方式向本公司登記資料，保用手續方正式生效：

- 1) 填妥德國寶VIP手機應用程式保用登記表(掃描右方二維碼)
- 2) 填妥本公司網頁保用登記表  
[www.germanpool.com/warranty](http://www.germanpool.com/warranty)
- 3) 填妥保用卡郵寄至本公司。



\* This warranty is not valid until customer registration information is received by our Service Centre within 10 days of purchase via one of the following means:

- 1) Visit our VIP App and register online:  
(Scan the QR Code on the right)
- 2) Visit our website and register online:  
[www.germanpool.com/warranty](http://www.germanpool.com/warranty)
- 3) Complete the attached Warranty Card and mail it back to our Customer Service Centre.



另請填妥以下表格並與正本發票一併保存，以便維修時核對資料。用戶提供之所有資料必須正確無誤，否則免費保用將會無效。  
Please fill out the form below. This information and the original purchase invoice will be required for any repairs. Warranty will be invalidated if information provided is found to be inaccurate.

型號 Model No.: ☐ GIC-KD28T

機身號碼 Serial No.: \_\_\_\_\_ 發票號碼 Invoice No.: \_\_\_\_\_

購買商號 Purchased From: \_\_\_\_\_ 購買日期 Purchase Date: \_\_\_\_\_

1. 未能出示購買發票正本者，將不獲免費維修服務。
2. 用戶應依照說明書的指示操作。本保用並不包括：
  - 上門安裝、檢驗、維修或更換零件之人工以及一切運輸費用；
  - 因天然與人為意外造成的損壞(包括運輸及其他)；
  - 電源接合不當、不依說明書而錯誤或疏忽使用本機所引致之損壞。
3. 於下列情況下，用戶之保用資格將被取消：
  - 購買發票有任何非認可之刪改；
  - 產品被用作商業或工業用途；
  - 產品經非認可之技術人員改裝或加裝任何配件；
  - 機身編號被擅自塗改、破壞或刪除。
4. 總代理有權選擇維修或更換配件或其損壞部份。
5. 產品一經被轉讓，其保用即被視作無效。

1. Customer who fails to present original purchase invoice will not be eligible for free warranty service.
2. Customer should always follow the operating instructions. This warranty does not apply to:
  - labour costs for on-site installation, check-up, repair, replacement of parts and other transportation costs;
  - damages caused by accidents of any kind (including material transfer and others);
  - operating failures resulting from applying incorrect voltage, improper usage, and unauthorized installations or repairs.
3. This warranty is invalid if:
  - the purchase invoice is modified by an unauthorized party;
  - the product is used for any commercial or industrial purposes;
  - the product is repaired or modified by unauthorized personnel, or unauthorized parts are installed;
  - the serial number is modified, damaged or removed from the product.
4. German Pool will, at its discretion, repair or replace any defective part.
5. This warranty will be void if there is any transfer of ownership from the original purchaser.

## 客戶服務及維修中心

### 中國香港

九龍大業街59號

三湘九龍灣貨運中心地下B室

電話: +852 2773 2888

傳真: +852 2356 9798

電郵: [repairs@germanpool.com](mailto:repairs@germanpool.com)

### 中國澳門

澳門青洲大馬路(青洲新路)

515號美居廣場第二期1樓A座

電話: +853 2875 2699

傳真: +853 2875 2661

## Customer Service & Repair Centre

### Hong Kong, China

Unit B, G/F, Sunshine Kowloon Bay

Cargo Centre, 59 Tai Yip Street,

Kowloon, Hong Kong

Tel : +852 2773 2888

Fax : +852 2356 9798

Email : [repairs@germanpool.com](mailto:repairs@germanpool.com)

### Macau, China

A, 1 Andar, Mei Kui Kuong Cheong Fase 2,

No.515 Avenida Do Conselheiro Borja

Macau

Tel : +853 2875 2699

Fax : +853 2875 2661

此保用只適用於香港及澳門

This warranty is valid only in Hong Kong and Macau

## German Pool (Hong Kong) Limited

### Hong Kong, China

Room 113, Newport Centre Phase II, 116 Ma Tau  
Kok Road, Tokwan, Kowloon, Hong Kong.  
Tel: +852 2773 2888  
Fax: +852 2765 8215

### Mainland China

8th, Xinxiang Road, Wusha Industrial Park,  
Daliang, Shunde, Foshan, Guangdong  
Tel: +86 757 2219 6888  
Fax: +86 757 2219 6809

### Macau, China

A, 1 Andar, Mei Kui Kuong Cheong Fase 2,  
No.515 Avenida Do Conselheiro Borja, Macau  
Tel: +853 2875 2699  
Fax: +853 2875 2661



香港《S MARK》  
安全認證



中國電器/家電行業  
十大影響力品牌



CEO非凡品牌大賞



香港優質商標



香港工商業獎



2007  
最具價值  
創建品牌企業獎



香港中小企業  
最佳拍攝大獎



香港消費者推獎品牌



香港《Q標》  
優質服務證書



香港名牌十年成就獎  
HONG KONG TOP BRAND TEN YEAR  
ACHIEVEMENT AWARD

© All rights reserved. Copying, reproducing or using the contents of this manual is not allowed without prior authorization from German Pool, violators will be prosecuted.