

Stainless Steel Travel Kettle | KTT-209



Online Warranty Registration



Please read these instructions and warranty information carefully before use and keep them handy for future reference.

USER MANUAL



請即進行保用登記！

有關保用條款細則，請看本說明書最後一頁。

Please register your warranty information now!

For Warranty Terms & Conditions,
please refer to the last page of this user manual.

Content

| | |
|--------------------------|----|
| Safety Instruction | 04 |
| Product Structure | 05 |
| Operating Instructions | 06 |
| Cleaning and Maintenance | 09 |
| Troubleshooting | 10 |
| Specifications | 10 |
| Warranty | 19 |

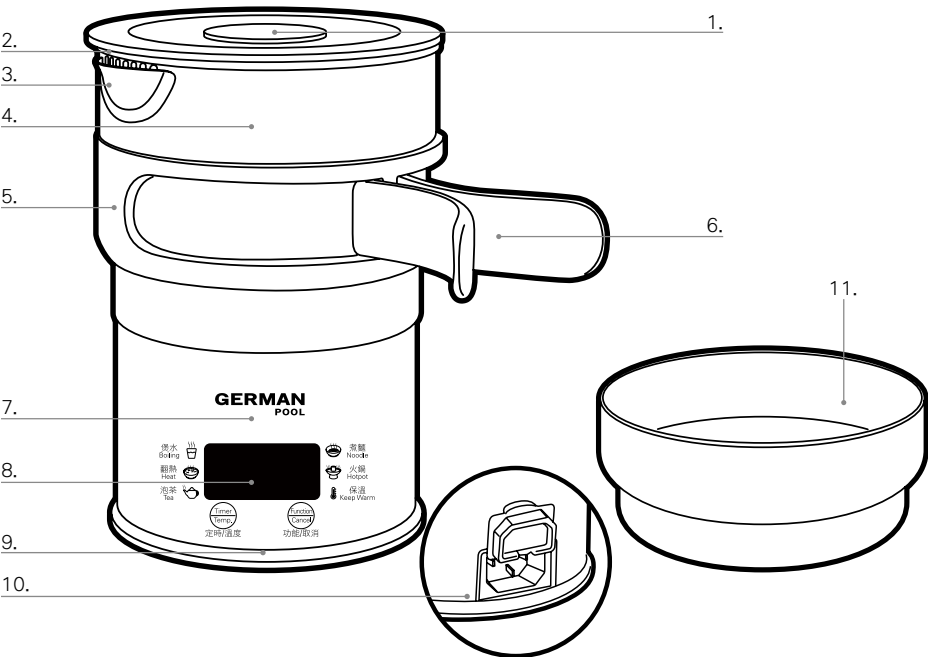
Safety Instruction

This User Manual contains safety instructions for the correct use of this product. Therefore, please read the Manual carefully before use to avoid damage and danger caused by improper use. All safety instructions are designed for your safety.

1. This product complies with the electrical product technical certification code and related safety regulations.
2. Before use, check whether the rated voltage on the product rating plate is consistent with the voltage you use.
3. Please use a grounded power supply to ensure personal safety.
4. When using this product, place it on a stable platform and out of reach of children.
5. Check the plug and power cord carefully. If any damage is found, please have it repaired or replaced by a professional.
6. Don't use this product on (or near) the surface of heat-labile objects such as carpets, plastics, etc. Objects that are susceptible to steam should not be placed above the product.
7. When the product is used, a large amount of steam will be ejected from the steam port. Beware for the steam.
8. Please keep the surface of the heating plate of the machine clean. After using for a period of time, the dirt on the surface of the heating plate must be cleaned in time.
9. Don't immerse the product in water or allow any liquid to flow into the product during cleaning to avoid danger.
10. If the power cord is damaged, it must be replaced by a professional from the manufacturer, or its service department or similar department to avoid danger.
11. If there is no water in the kettle body, please do not heat it. Otherwise it will affect the service life of the product.
12. The product must be attended to during the process of boiling water. Please keep children away and do not let children pull the power cord.
13. Don't immerse the power cord, plug, machine, etc. in water or other liquids to prevent damage to the product and electric shock.
14. If you find that the body, base or other parts are damaged, don't use it and return it to the manufacturer for repair.
15. When adding water to the body, do not exceed the maximum water mark. If too much water is added, the water will overflow when it is boiling.
16. During the work, please do not touch the body with your hands to avoid being burnt.
17. When pulling out the power cord from the socket, please hold on to the plug. Do not forcibly pull the power cord. Otherwise, it may cause electric shock or short circuit.
18. Don't plug or unplug the power cord with wet hands. Otherwise, it may cause a short circuit or electric shock.
19. Anyone except for professional repair technicians shouldn't disassemble, repair or modify the machine. Otherwise it may cause fire and electric leakage.
20. If the kettle is filled to be too full, boiling water may be ejected.
21. Note: In order to avoid the danger of accidental resetting of the thermal circuit breaker, the appliance cannot be powered by an external switching device, such as a timer or connected to a circuit that is on and off periodically by the common components.

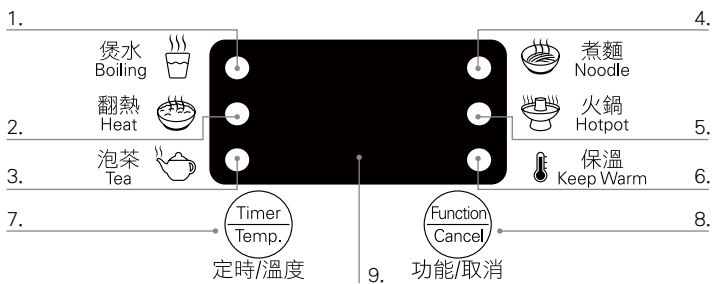
Product Structure

Main Body



- | | | |
|-------------------------|----------------------|------------------------------|
| 1. Lid | 5. Handle Ring | 9. Bottom Cover |
| 2. Pot Mouth | 6. Extendable Handle | 10. Power Cord Outlet (Back) |
| 3. Spout | 7. Kettle Base | 11. Plastic Bowl |
| 4. Stainless Steel Body | 8. Control Panel | |

Control Panel



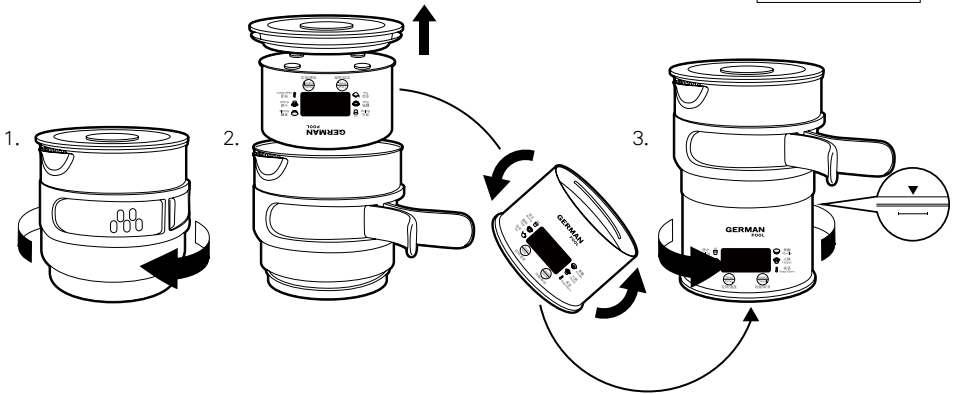
- | | |
|-----------------------------|------------------------------------|
| 1. Boiling Indication Light | 6. Keep Warm Indication Light |
| 2. Heat indication Light | 7. Time/Temperature Setting Button |
| 3. Tea Indication Light | 8. Function/Cancel Button |
| 4. Noodle Indication Light | 9. LED Display |
| 5. Hotpot Indication Light | |

Operating Instructions

How to Assemble the Product:

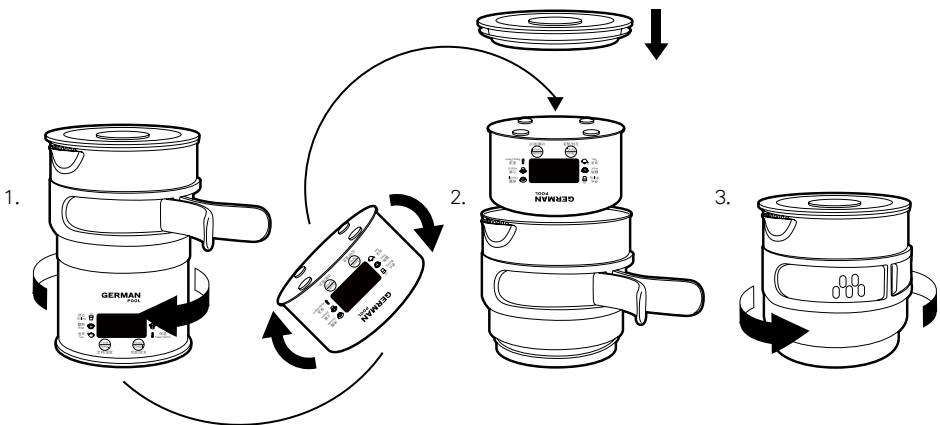
1. Rotate to separate the Plastic Bowl and the Stainless Steel Body.
2. Remove the Lid and take out the Kettle Base from the Stainless Steel Body.
3. Screw the Kettle Base into the Stainless Steel Body until the triangle reach the indicator.
4. Make sure all components are securely fastened.

Watch the video clip



How to Store the Product:

1. Rotate to separate the Kettle Base and the Stainless Steel Body.
2. Remove the Lid and put the Kettle Base inside the Stainless Steel Body. Put the Lid in place.
3. Screw the Plastic Bowl into the Stainless Steel Body.
4. Make sure all components are securely fastened.



Operating Instructions

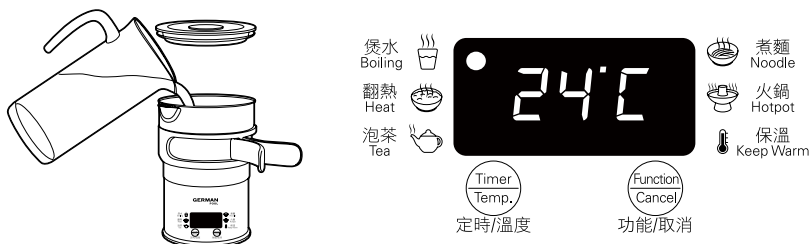
How to Use the Control Panel

Power on the product and the buzzer gives a beep sound to enter Standby Mode. The Control Panel is always lit and shows "OFF". Press the "Function/Cancel" Button to select the functions: Boiling, Heat, Tea, Noodle, Hotpot, and Keep Warm.



How to Boil Water

1. Add an appropriate amount of water into the Stainless Steel Body not exceeding the maximum scale of 0.5L (to avoid boiling water overflowing from the spout during the boiling process).
2. Select the "Boil" function and the Control Panel shows water temperature by default; the "Boil Function Indicator Light" flashes and the product enters the working mode after 5 seconds, "Boil Function Indicator Light" is always on.
3. When the work is completed, the buzzer gives a beep sound and then enters the "Keep Warm" function to keep warm.



How to Adjust Time

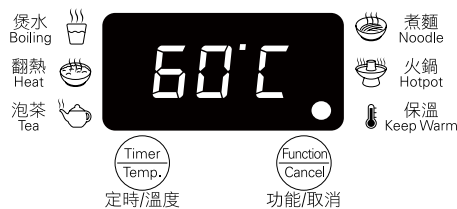
1. Press the "Function/Cancel" button to select "Tea", "Noodle" or "Hotpot" function, and the Control Panel shows the default time of selected function; the indicator light flashes.
2. Press the "Time/Temperature" button to adjust the heating time with the range of 5-120 minutes. Each press of button will have time increasing by 5 minutes, and the long press leads to fast increase by 10 minutes.
3. After 5 seconds, the product automatically enters the working mode and the indicator light is always on.
4. When the work is completed, the buzzer gives a beep sound and then enters the "Keep Warm" function.



Operating Instructions

How to Adjust Keep Warm Temperature

1. Press the “Function/Cancel” Button to select the “Warm” function and the Control Panel shows the current temperature by default; the “Keep Warm Indication Light” flashes.
2. The default keep warm temperature is 60 °C. Press the “Time/Temperature” Button to adjust the temperature with the range of 30-90 °C. Each press of the button will increase temperature by 1 °C, and the long press leads to increase by 5 °C.
3. After 5 seconds, the product automatically enters working mode and the “Keep Warm Indication Light” is always on. The defaulted keep warm time is 24 hours.



List of Function Default Parameter

| Function | Default Working Time | Heating Temperature | Default Keep-Warm Temperature | Working Time Adjustable Range | Keep-Warm Temperature Adjustable Range |
|-----------|----------------------|---------------------|-------------------------------|-------------------------------|----------------------------------------|
| Boil | / | 100 °C | 60 °C | / | 30-90 °C |
| Heat | 5 minutes | 100 °C | 60 °C | / | 30-90 °C |
| Tea | 15 minutes | 100 °C | 60 °C | 5-120 minutes | 30-90 °C |
| Noodle | 10 minutes | 100 °C | 60 °C | 5-30minutes | / |
| Hotpot | 90 minutes | 100 °C | 60 °C | 30-120minutes | / |
| Keep Warm | 24hours | 60 °C | 60 °C | / | 30-90 °C |

Note: Please keep the lid open when cooking food tends to foam up.

Cleaning and Maintenance

1. In order to extend the service life of the product, the mineral deposits in the kettle should be cleaned regularly.
2. Unplug the power cord and allow the kettle to cool down before cleaning.
3. Don't use steel balls and any chemical or abrasive powder cleaner to clean the exterior surface of the kettle.

Watch the video clip



Regular Cleaning

- Wash immediately after each use.
- Thoroughly clean the inside of the kettle, the spout and the lid with a little neutral detergent and a non-abrasive sponge.
- The kettle base cannot be flushed or splashed. Wipe the body and base with a slightly damp cloth and dry with a dry cloth.
- Please wait until the inside and outside of the kettle are completely dry before folding.

Descaling

1. Pour 0.2L edible white vinegar into the product and let it soak for more than 1 hour in the kettle.
2. Pour the solution out of the kettle and wipe off the remaining sediment with a damp cloth.
3. Add water, bring it to a boil and discard the water in the kettle. Rinse it with water for 4-5 times. The kettle can be used again.
4. Repeat the above steps if necessary.
5. Wipe the exterior of the kettle with a damp cloth wrung out.

Troubleshooting

| Malfunction | Probable Cause | Solution |
|--------------------------------------------|----------------------------|--------------------------------------------|
| Kettle does not start | Not plugged in properly | Check the power connection |
| | Circuit failure | Contact Customer Service and Repair Center |
| Kettle does not heat | Function not yet selected | Choose appropriate function |
| | Base heating plate failure | Contact Customer Service and Repair Center |
| | Thermostat failure | Contact Customer Service and Repair Center |
| | Circuit failure | Contact Customer Service and Repair Center |
| Switch does not flip after water is boiled | Thermostat failure | Contact Customer Service and Repair Center |
| | Circuit failure | Contact Customer Service and Repair Center |
| Switch flipped before water is boiled | Water scale too thick | Descale kettle |
| | Circuit failure | Contact Customer Service and Repair Center |

Note: If the problem was not solved by the above troubleshooting, please contact our Customer Service. It is strictly forbidden for non-professionals to disassemble this machine.

Specifications

| | |
|--------------------|------------------------------------------------------------------------------|
| Model | KTT-209 |
| Voltage | 100-240V |
| Power | 230W-600W |
| Product Dimensions | Unfolded: (H)165 x (W)115 x (D)115 mm Folded: (H)110 x (W)115 x (D)115 mm |
| Net Weight | 0.75 kg |
| Capacity | 500ml |

Specifications are subject to change with prior notice.

If there is any inconsistency or ambiguity between the English and the Chinese version, the Chinese Version shall prevail.

Refer to www.germanpool.com for the most updated version of the User Manual.

目錄

| | |
|--------|----|
| 安全注意事項 | 12 |
|--------|----|

| | |
|------|----|
| 產品結構 | 13 |
|------|----|

| | |
|------|----|
| 使用說明 | 14 |
|------|----|

| | |
|-------|----|
| 清潔與維護 | 17 |
|-------|----|

| | |
|------|----|
| 故障檢修 | 18 |
|------|----|

| | |
|------|----|
| 技術規格 | 18 |
|------|----|

| | |
|------|----|
| 保用條款 | 19 |
|------|----|

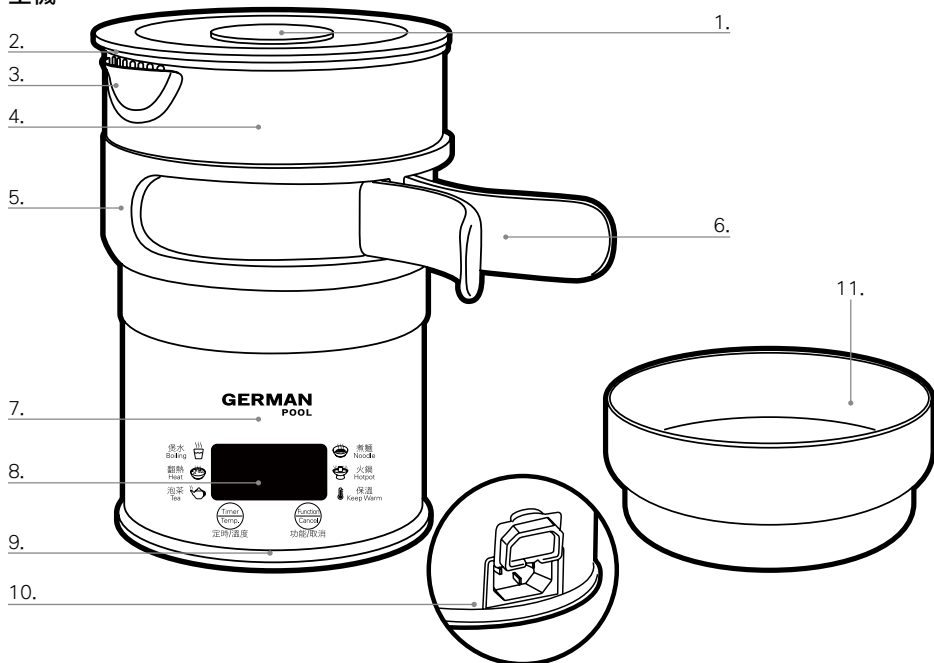
安全及注意事項

本說明書包含正確使用本產品的安全說明，因此，使用前請仔細閱讀說明書，以避免使用不當而造成的損壞及危險，所有的安全說明都是為了您的安全著想。

1. 本產品符合電器產品技術認證守則和相關安全法規。
2. 使用前應檢查產品銘牌所標示的額定電壓是否與您使用的電壓一致。
3. 請使用有接地保護的電源，以確保人生安全。
4. 使用本產品時應放置於穩固平台上，並放置在兒童觸摸不到的地方。
5. 要對插頭、電源線進行仔細的全面檢查，如發現有損壞現象請由專業人士維修或更換。
6. 不要在地毯、塑料等不耐熱的物體表面（或其附近）使用本產品，容易受蒸氣影響的物體不要置於本產品上方。
7. 產品使用時會產生大量蒸氣從蒸氣口噴出，小心被蒸氣燙傷。
8. 請保持機器發熱盤表面清潔，使用一段時間後，必須及時清理發熱盤表面的污垢。
9. 清洗時請勿浸入水中或讓液體流入產品內部，以免發生危險！
10. 如果電源線損壞，為了避免危險，必須由製造商、其維修部或類似的專業人員更換。
11. 如果壺身內沒有水，請不要乾燒，否則會影響產品使用壽命。
12. 產品在燒水的過程必須有人看管，請不要讓小孩接近，並且不要讓小孩拉扯電源線。
13. 請不要將電源線、插頭或整個機體等浸入水裡或其他液體裡以防止損壞本產品而觸電。
14. 發現壺身、底座或其他部件損壞時，請不要使用，並退回廠商進行維修。
15. 在往不鏽鋼壺身加水時，不可超過最大水位標誌，如果水加得太滿，水在沸騰時有機會溢出。
16. 產品在工作過程中，請勿用手去接觸不鏽鋼壺身，避免被燙傷。
17. 當拔除電源線插頭時，請握住插頭，切勿強行拉扯電源線，否則可能會導致觸電或者短路等危險。
18. 請勿用濕手插拔電源線，否則可能導致短路、觸電等危險。
19. 除專業修理技術員外，請切對機器進行拆卸、修理、改裝，否則可能導致起火漏電等危險。
20. 如果產品注水太滿，沸水可能噴出。
21. 注意：為避免由熱斷路器的誤復位產生危險，本產品不能通過外部開關裝置供電，例如定時器或者接連到由通用部件定時進行通、斷電。

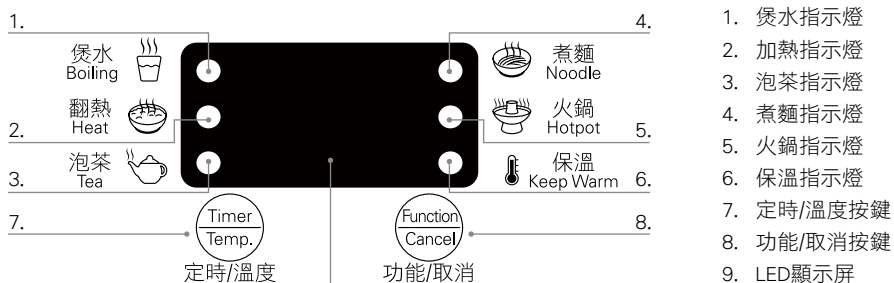
產品結構

主機



- | | | |
|----------|----------|-----------------|
| 1. 壺蓋 | 5. 手柄固定環 | 9. 底蓋 |
| 2. 壺口 | 6. 手柄 | 10. 電源線接頭（底座背後） |
| 3. 壺嘴 | 7. 底座 | 11. 膠碗 |
| 4. 不鏽鋼壺身 | 8. 控制面板 | |

控制面板



- | | |
|----------|------------|
| 1. 煲水指示燈 | 4. 煮麵指示燈 |
| 2. 加熱指示燈 | 5. 火鍋指示燈 |
| 3. 泡茶指示燈 | 6. 保溫指示燈 |
| | 7. 定時/溫度按鍵 |
| | 8. 功能/取消按鍵 |
| | 9. LED顯示屏 |

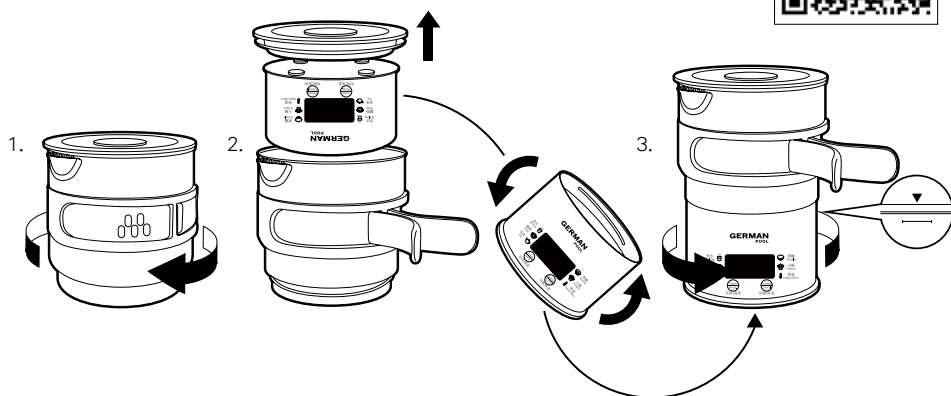
注意：產品圖片僅供參考，具體以實物為準。

使用說明

組裝水壺：

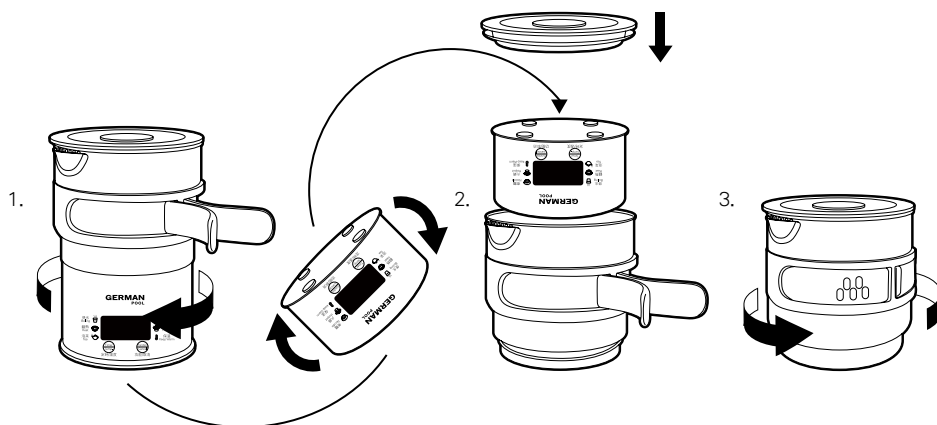
1. 握住膠碗及不鏽鋼壺身，旋轉使兩者分離。
2. 取下壺蓋，從不鏽鋼壺身取出底座。
3. 握住底座及不鏽鋼壺身，旋轉直至機身三角形標示與扭緊標示對齊。
4. 確保所有組件穩固扣緊後，組裝完成。

觀看操作視頻



收納水壺：

1. 握住底座及不鏽鋼壺身，旋轉使兩者分離。
2. 取下壺蓋，將底座倒置放進不鏽鋼壺身，蓋上壺蓋。
3. 握住膠碗及不鏽鋼壺身，旋轉使兩者合併。
4. 確保所有組件穩固扣緊後，收納完成。



使用說明

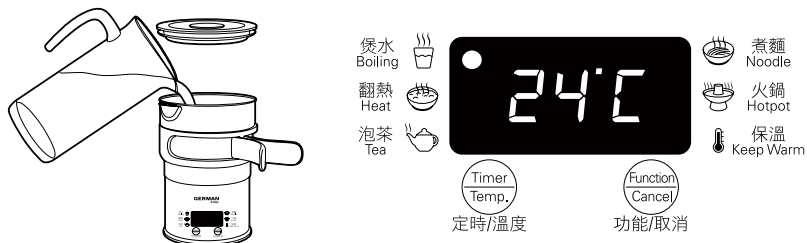
控制面板使用方法

接通電源，蜂鳴器發出提示聲一聲，產品進入待機狀態，LED顯示屏常亮並顯示「OFF」。此時，可按「功能/取消鍵」進行功能選擇，循環次序為：煲水、翻熱、泡茶、煮麵、火鍋及保溫。



煲水功能使用方法

1. 在壺身加入適量的水，最大容量不能超過最大刻度0.5L（以免在煲水過程中沸水從壺嘴溢出），蓋好壺蓋。
2. 選擇煲水功能，默認顯示當前實際水溫，煲水指示燈閃爍，5秒後進入工作狀態，煲水指示燈常亮。
3. 當工作完成後，蜂鳴器發出提示聲一聲後進入保溫狀態。



時間調節

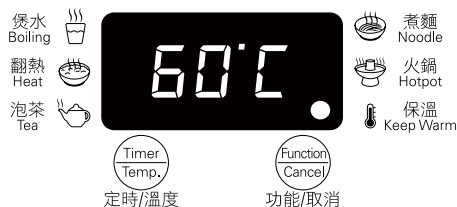
1. 按「功能/取消鍵」選擇泡茶、煮麵或火鍋功能，默認顯示該功能的預設工作時間，相對應的功能指示燈閃爍。
2. 按「定時/溫度鍵」調節加熱時間，加熱時間調節範圍為5-120分鐘，每短按一次以5分鐘遞增，長按以10分鐘遞增，循環調節。
3. 完成設置後，5秒後自動進入工作狀態，相對應的功能指示燈常亮。
4. 當工作完成後，蜂鳴器發出提示聲一聲後進入保溫狀態。



使用說明

保溫溫度調節

1. 按「功能/取消鍵」選擇保溫功能，默認顯示當前實際水溫，保溫指示燈閃爍。
2. 按「定時/溫度鍵」選擇保溫溫度（默認保溫溫度為60℃），保溫溫度調節30-90℃，每短一次以1℃遞增，長按以5℃遞增，循環調節。
3. 完成設置後，5秒後自動進入保溫狀態，保溫功能指示燈常亮，默認保溫24小時。



功能默認參數表

| 功能 | 默認工作時間 | 加熱溫度 | 默認保溫溫度 | 工作時間可調範圍 | 保可調範圍溫度 |
|----|--------|------|--------|----------|---------|
| 煲水 | / | 100℃ | 60℃ | / | 30-90℃ |
| 翻熱 | 5分鐘 | 100℃ | 60℃ | / | 30-90℃ |
| 泡茶 | 15分鐘 | 100℃ | 60℃ | 5-120分鐘 | 30-90℃ |
| 煮麵 | 10分鐘 | 100℃ | 60℃ | 5-30分鐘 | / |
| 火鍋 | 90分鐘 | 100℃ | 60℃ | 30-120分鐘 | / |
| 保溫 | 24小時 | 60℃ | 60℃ | / | 30-90℃ |

注意：煮容易起泡的食材，請打開上蓋。

清潔與維護

1. 為延長產品使用壽命，應定期清潔水壺內的礦物沉澱物。
2. 清潔前應拔下電源插頭並讓產品冷卻。
3. 切勿用鋼絲球及任何化學或研磨粉狀的清潔劑來清洗水壺外部表面。

觀看操作視頻



普通清潔

- 每次使用後請立即進行清潔
- 用少量中性清潔劑和非研磨性軟布徹底清潔水壺內部、壺嘴和壺蓋。
- 水壺底座不能直接沖洗或浸入水。請使用微濕軟布擦拭機身和底座，然後用乾布擦乾。
- 請確保水壺的內部和外部完全乾燥後才進行收納。

清除水垢

1. 將0.2L食用白醋倒入壺內，讓其浸泡1小時以上。
2. 將食用白醋倒出，用濕布擦去殘留的沉澱物。
3. 在壺內注水並煲至沸騰然後倒掉，用清水沖洗4-5次後即可再次使用。
4. 必要時，可重複以上步驟。
5. 水壺外部可用擰乾水的濕布擦乾淨。

故障檢修

| 故障 | 可能原因 | 處理方法 |
|--------|-------|-------------|
| 水壺無法啟動 | 插頭未插好 | 檢查電源接駁 |
| | 電路故障 | 聯絡客戶服務及維修中心 |
| 水壺無法加熱 | 未選擇功能 | 選擇所需功能 |
| | 發熱盤故障 | 聯絡客戶服務及維修中心 |
| | 溫控器故障 | 聯絡客戶服務及維修中心 |
| | 電路故障 | 聯絡客戶服務及維修中心 |
| 水滾後不跳掣 | 溫控器故障 | 聯絡客戶服務及維修中心 |
| | 電路故障 | 聯絡客戶服務及維修中心 |
| 水未滾便跳掣 | 水垢太厚 | 清除水垢 |
| | 電路故障 | 聯絡客戶服務及維修中心 |

注意：如無法順利排除故障，請與客戶服務及維修中心聯絡，嚴禁非專業人員對本機拆卸。

技術規格

| | |
|------|--------------------------------------------------------------------|
| 型號 | KTT-209 |
| 電壓 | 100-240V |
| 功率 | 230W-600W |
| 產品尺寸 | 摺疊前：(H)165 x (W)115 x (D)115 mm 摺疊後：(H)110 x (W)115 x (D)115 mm |
| 淨重 | 0.75kg |
| 容量 | 500ml |

產品規格及設計如有變更，恕不另行通知。
中英文版本如有出入，一概以中文版為準。
本產品使用說明書以www.germanpoil.com網上版為最新版本。

保用條款

此保用提供德國寶產品之機件在正常使用下壹年保用
(自購買日起計算)。

- * 貴戶須在購機十天內，以下列其中一種方式向本公司登記資料，保用手續方正式生效：

- 1) 填妥本公司網頁內之
保用登記表格

[www.germanpool.com/
warranty](http://www.germanpool.com/warranty)

- 2) 填妥保用登記卡，
郵寄至本公司。



Warranty Terms & Conditions

Under normal operations, the product will gurantee a 1-year full warranty provided by German Pool (effective from the date of purchase).

- * This warranty is not valid until customer registration information is received by our Service Centre within 10 days of purchase via one of the following means:

- 1) Visit our website and register online:

[www.germanpool.com/
warranty](http://www.germanpool.com/warranty)

- 2) Complete all the fields on the attached Warranty Card and mail it back to our Customer Service Centre.



另請填妥以下表格並與正本發票一併保存，以便維修時核對資料。用戶提供之所有資料必須正確無誤，否則免費保用將會無效。
Please fill out the form below. This information and the original purchase invoice will be required for any repairs. Warranty will be invalidated if information provided is found to be inaccurate.

型號 Model No. : **KTT-209**

機身號碼 Serial No. : _____ 發票號碼 Invoice No. : _____

購買商號 Purchased From : _____ 購買日期 Purchase Date : _____

- 未能出示購買發票正本者，將不獲免費維修服務。
- 用戶應依照說明書的指示操作。本保用並不包括：
 - 上門安裝、檢驗、維修或更換零件之人工以及一切運輸費用；
 - 因天然與人為意外造成的損壞 (包括運輸及其他)；
 - 電源接合不當、不依說明書而錯誤或疏忽使用本機所引致之損壞。
- 於下列情況下，用戶之保用資格將被取消：
 - 購買發票有任何非認可之刪改；
 - 產品被用作商業或工業用途；
 - 產品經非認可之技術人員改裝或加裝任何配件；
 - 機身編號被擅自塗改、破壞或刪除。
- 總代理有權選擇維修或更換配件或其損壞部份。
- 產品一經被轉讓，其保用即被視作無效。

- Customer who fails to present original purchase invoice will not be eligible for free warranty service.
- Customer should always follow the operating instructions. This warranty does not apply to:
 - labour costs for on-site installation, check-up, repair, replacement of parts and other transportation costs;
 - damages caused by accidents of any kind (including material transfer and others);
 - operating failures resulting from applying incorrect voltage, improper usage, and unauthorized installations or repairs.
- This warranty is invalid if:
 - the purchase invoice is modified by an unauthorized party;
 - the product is used for any commercial or industrial purposes;
 - the product is repaired or modified by unauthorized personnel, or unauthorized parts are installed;
 - the serial number is modified, damaged or removed from the product.
- German Pool will, at its discretion, repair or replace any defective part.
- This warranty will be void if there is any transfer of ownership from the original purchaser.

客戶服務及維修中心

中國香港

九龍灣啟興道1-3號

九龍貨倉10樓

電話：+852 2333 6249

傳真：+852 2356 9798

電郵：repairs@germanpool.com

中國澳門

澳門俾利喇街145號

寶豐工業大廈3樓

電話：+853 2875 2699

傳真：+853 2875 2661

Customer Service & Repair Centre

Hong Kong, China

10/F, Kowloon Godown

1-3 Kai Hing Road, Kowloon Bay,

Kowloon, Hong Kong

Tel : +852 2333 6249

Fax : +852 2356 9798

Email : repairs@germanpool.com

Macau, China

3/F, Edificio Industrial Pou Fung,

145 Rua de Francisco Xavier Pereira,

Macau

Tel : +853 2875 2699

Fax : +853 2875 2661

此保用只適用於香港及澳門

This warranty is valid only in Hong Kong and Macau

German Pool (Hong Kong) Limited

Hong Kong, China

Room 113, Newport Centre Phase II, 116 Ma Tau
Kok Road, Tokwawan, Kowloon, Hong Kong
Tel: +852 2773 2888
Fax: +852 2765 8215

Mainland China

8th, Xinxiang Road, Wusha Industrial Park,
Daliang, Shunde, Foshan, Guangdong
Tel: +86 757-2219 6888
Fax: +86 757-2219 6809

Macau, China

3/F, Edificio Industrial Pou Fung,
145 Rua de Francisco Xavier Pereira, Macau
Tel: +853 2875 2699
Fax: +853 2875 2661



香港《S MARK》
安全認證



中國游泳池/泳電行業
十大影響力品牌



CEO非凡品牌大賞



香港優質商標



香港工商業獎



2007
最具價值
創建品牌企業獎



香港中小企業
最佳拍攝大獎



香港消費者推祟品牌



香港《Q MARK》
優質服務證書



香港名牌十年成就獎
HONG KONG TOP BRAND TEN YEAR
ACHIEVEMENT AWARD

©All rights reserved. Copying, reproducing or using the contents of this manual is not allowed without prior authorization from German Pool, violators will be prosecuted.