

Detachable Portable Air Cooler Fan

EFC-C1050



Online Warranty Registration



Please read these instructions and warranty information carefully before use and keep them handy for future reference.

USER MANUAL

請即進行保用登記！
有關保用條款細則，請看說明書最後一頁。

Please register your warranty information now !
For Warranty Terms & Conditions,
please refer to the last page of this user manual.

Table of Contents

Warnings & Safety Precautions	04
Product Structure	07
Operation Instructions	08
Cleaning & Maintenance	14
Technical Specification	15
Warranty Terms & Conditions	27

Warnings & Safety Precautions

WARNING!

Read all instructions carefully before using this product.

- This product is for domestic indoor use only. If this product is used for any commercial, industrial, rental or other purposes, product warranty will be VOIDED.
- This product is not intended for use by children or persons with reduced physical, sensory or mental capabilities, or lack of experience and knowledge, unless they have been given supervision or instruction concerning use of this product by an adult responsible for their safety.
- Mind your children and DO NOT let children play with this product.
- Cleaning and user maintenance shall not be made by children without supervision.
- Check the voltage indicated on the rating label before using this product.
- If the supply cord is damaged, it must be replaced by the manufacturer, its service agent or similarly qualified persons in order to avoid hazards.
- Unplug this product from the power source before cleaning and maintenance.
- Contact German Pool authorized service technician for repair or maintenance of this product.

To avoid potential dangers from operational errors and to facilitate the use of this product, please read this user manual thoroughly before using this product.

1. DO NOT use outdoors, this product is for indoor use only.
2. Before using this product, make sure to use a qualified socket that meets your local electrical requirements. When moving, make sure the mains voltage is correct.
3. This product is not intended for use by persons (including children) with reduced physical, sensory or mental capabilities, or lack of experience and knowledge, unless they have been given supervision or instruction concerning use of this product by a person responsible for their safety. Children should be supervised to ensure that they do not play with this product.
4. This product can be used by children aged from 8 years and above and persons with reduced physical, sensory or mental capabilities or lack of experience and knowledge if they have been given supervision or instruction concerning use of this product in a safe way and understand the hazards involved. DO NOT allow children to play with this product. Cleaning and user maintenance shall not be made by children without supervision.
5. If the supply cord is damaged, it must be replaced by qualified technicians from German Pool Customer Service & Repair Centre in order to avoid hazards.
6. Unplug this product from the power source during water filling and cleaning.
7. DO NOT touch the power cord or power plug with wet hands in order to prevent electric shock.
8. DO NOT pull on the power cord.
9. DO NOT bend or place heavy objects on the power cord.
10. DO NOT insert foreign matters like wooden or metal sticks into the air inlets or air outlet, as it may cause electric shock, short circuit or damage this product.

Warnings & Safety Precautions

11. DO NOT spray insecticide or flammable sprays in the vicinity of this product as it may cause damage to this product.
12. Avoid aiming this product's air outlet directly at young children for a long period of time, as it may cause the child to catch a cold or affect the child's health.
13. When using this product, make sure there is no foreign matter adhering to the power cord and power plug, and make sure the power plug is fully plugged in.
14. If this product emits abnormal smell or abnormal noise, stop using immediately and unplug from the power source.
15. When water is added into this product, DO NOT tilt or bump this product when placing or moving this product in order to avoid water spilling out. If this product has been tilted while there is water inside, unplug from the power source immediately and wait at least 24 hours for it to dry out before using again.
16. When filling the water tank, DO NOT exceed the maximum water line. When using Cool Function, the water pump must be placed inside the water tank, and the water tank must not be empty, as the water pump cannot burn dry for a long period of time, otherwise it may damage the water pump or lead to other damages.
17. When the water tank is filled with water, DO NOT lift the product by its handles, otherwise the water may spill out, move this product only by pushing it around on its casters. This product can only be lifted by its handles when it is confirmed there is no or very little water in the water tank.
18. When Cool Function is activated, DO NOT remove the filter and the water curtain, as it may lead to water spraying out from the air outlet.
19. This product must be turned off and unplugged from the socket when no one is home or when it will not be used in a prolonged period of time.
20. Should this product malfunction, it can only be repaired by German Pool Customer Service & Repair Centre. DO NOT disassemble or repair this product by yourself. Any unauthorized disassembly or retrofitting of this product will affect its safety.
21. DO NOT ingest the battery. Chemical burn hazard.
22. This product contains a coin / button cell battery. If the coin / button cell battery is swallowed, it can cause severe internal burns in just 2 hours and can lead to death.
23. Keep new and used batteries away from children.
24. If the battery compartment does not close securely, stop using this product and keep it away from children.
25. If you suspect batteries might have been swallowed or placed inside any part of the body, seek immediate medical attention.
26. The battery contains materials which are hazardous to the environment; when scrapping this product, the battery must be removed from this product and disposed of safely.
27. Be aware that high humidity levels may encourage the growth of biological organisms in the environment.

Warnings & Safety Precautions

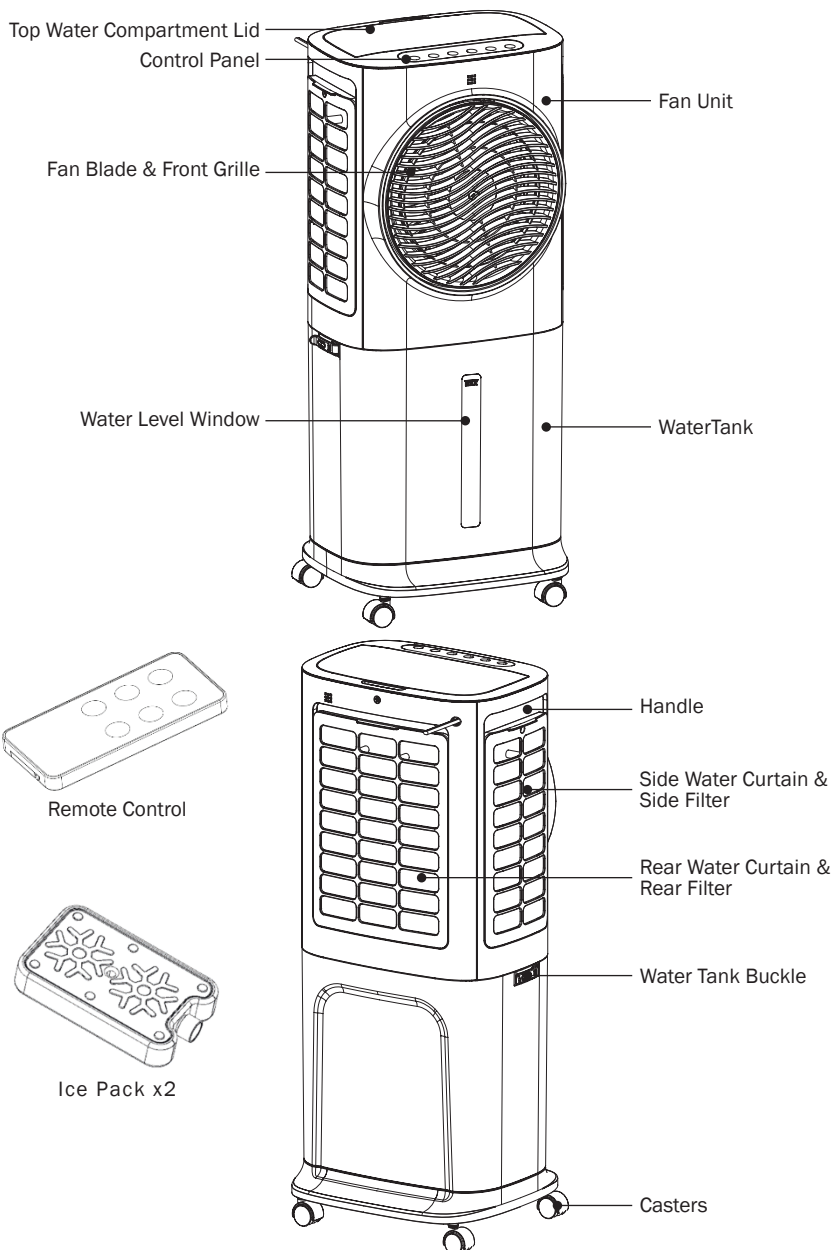
28. DO NOT permit the area around this product to become damp or wet. If dampness occurs, lower the output of this product. If this product's output volume cannot be lowered, use this product intermittently. DO NOT allow absorbent materials (such as carpeting, curtains, drapes, or tablecloths) to become damp.
29. DO NOT leave water in the water tank when this product is not in use.
30. Empty the water tank and clean this product before putting into storage. Clean this product again before next use.
31. When adding water into the top water compartment, make sure this product is turned off and unplugged from the power source. When adding water, DO NOT allow water to overflow from the surface of the water compartment, otherwise it may lead to electric shock or short circuit causing the product to burn and fail to start.
32. When product is turned off, the pump will stop working, water in the top water compartment will flow back into the water tank through the pipe, during which air may enter the water pipe. If this product is turned back on immediately, air pressure will accumulate in the water pipe, and the pump will not be able to pump up water properly. Therefore, user must wait for a moment before turning on this product again, in order for the pump to pump up water properly.

Recycling Precautions



Dispose of electrical appliances at a specialized collection facility. If electrical appliances are disposed of in the landfill, hazardous materials can leak into the groundwater and enter the food chain, jeopardizing your health and well-being. Most packaging materials are recyclable, please dispose of this material through a recycling bin.

Product Structure



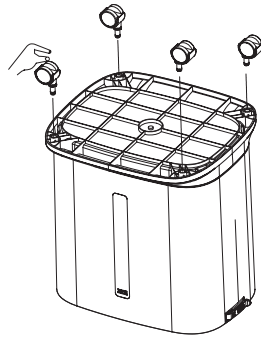
Operation Instructions

Installing The Product

Remove product from the packing material, attach the fan unit on top of the water tank, and make sure the water tank buckles are locked in place before use.

Installing The Casters

Install the casters as shown in the diagram, if you prefer the product can be moved around.

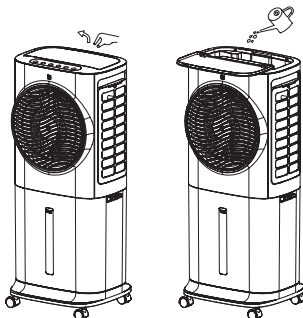


Filling The Water Tank

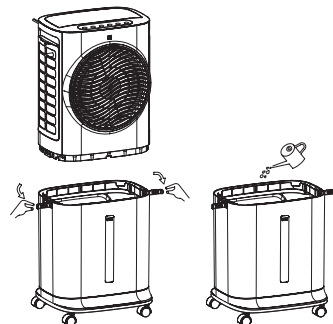
Note:

- To use Cool function, user must first fill up the water tank. DO NOT fill to above the maximum water line.
- It is recommended to use clean tap water.
- When using this product for the first time, there may be a slight smell, and the water in the water tank may have a slight color. This is normal. The smell and color are non-toxic and harmless, and will not affect your health.

1. Before adding water, make sure to turn off the product and unplug it from the power source.
2. Adding water to the top water compartment: Open the lid of the top water compartment, and slowly fill in water, then close the lid of the top water compartment.
3. Adding water to the water tank: Unlock the water tank by flipping the water tank buckles outwards horizontally, remove the fan unit, and slowly fill the water tank with water; after filling in water, reattach the fan unit onto the top of the water tank, and flip the buckles back in to securely lock in the water tank before use.
4. When adding water, monitor the water level at the water level window. DO NOT fill to above the maximum water line.



Adding water to the top water compartment



Adding water to the water tank

Operation Instructions

Adding In Ice Packs

The ice packs that come with this product have the feature of cold storage and heat preservation, they can absorb heat from the water, leaving the water temperature in the water tank lower than the ambient temperature, making the air blowing out cooler.

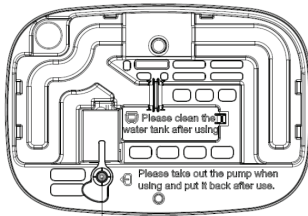
⚠ WARNING!

- DO NOT open the ice packs, and DO NOT swallow.
- When using the ice packs, make sure the water tank has water.

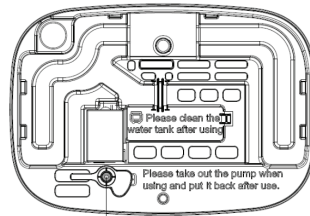
1. Place ice packs in the freezer until completely frozen.
2. Unlock the water tank by flipping the water tank buckles outwards horizontally, remove the fan unit, place the frozen ice packs into the water tank (make sure the water tank has water).
3. Reattach the fan unit onto the top of the water tank, and flip the buckles back in to securely lock in the water tank before use.

Using The Water Pump

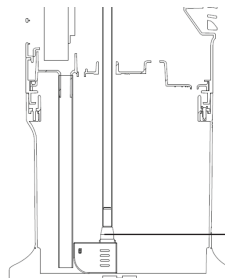
1. Remove the fan unit from the water tank, and place the fan unit upside down.
2. Rotate the water pump lock counterclockwise, and take the water pump and pipe out from its storage slot (the water pipe is fixed by a buckle), so that the water pump and water pipe can naturally dangle to the bottom of the water tank.



Water Pump Lock



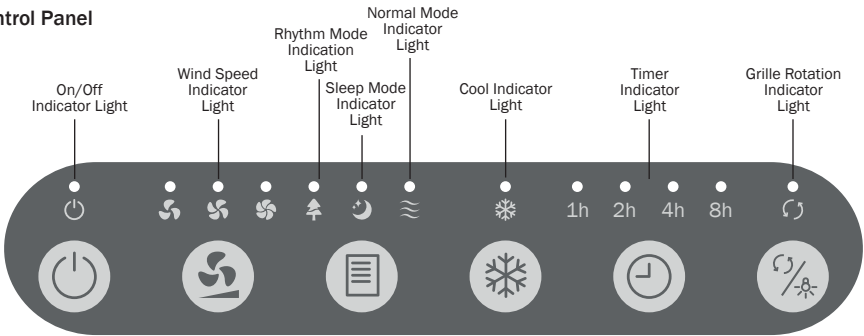
Open water pump lock to take out water pump



Let water pump and water pipe naturally dangle to the bottom of the water tank

Operation Instructions

Control Panel



Remote Control



Button		Function
	On/Off Button	Tap button to turn product on or off
	Wind Speed Button	<ul style="list-style-type: none">Tap button repeatedly to cycle among High / Medium / Low wind speedsLong-tap button for 3 seconds to initiate Dry Mode
	Mode Button	Tap button repeatedly to cycle among Rhythm Mode / Sleep Mode / Normal Mode
	Cool Function Button	Tap button to turn Cool Function on or off
	Timer Button	<ul style="list-style-type: none">When product is turned on, tap this button to activate Off-Timer FunctionTap button repeatedly to set off-timer between 1-8 hours
	Grille Rotation Button	<ul style="list-style-type: none">Tap button to turn Grill Rotation Function on or offLong-tap button for 3 seconds to turn off all indicator lights

Operation Instructions

Turn On & Standby State

1. Connect to the power source, turn on the product, buzzer beeps twice and product enters standby state.
2. Tap On/Off Button, the product runs in Low Speed and Normal Mode by default, corresponding indicator lights light up constant.
3. When product is running, tap On/Off Button to turn off the product.

Note:

- When product is running, if product does not receive any command in 1 minute, all indicator lights will go dim; tap any button and indicator lights will return to normal brightness.
- When user tap On/Off Button to turn off the product, next time the product is turned on, it will run on the previous setting (except for Timer, Sleep Mode and Dry Mode).

Adjusting Wind Speed

When product is running, tap Wind Speed Button to adjust among High, Medium and Low Wind Speed.

Dry Mode

This mode is for drying the wate curtain before turning off the product to prevent mold.

When product is running, long-tap Wind Speed Button for 3 seconds, and product will initiate Dry Mode, product will run on high speed for 20 minutes, then return to standby state; High Wind Speed Indicator Light blinks and On/Off Indicator Light lights up constant. In Dry Mode, Cool Function will cease to operate.

Note:

- In Dry Mode, all buttons except On/Off Button become inoperable.
- Long-tap Wind Speed Button for 3 seconds again to exit Dry Mode, and product returns to previous setting.

Operation Instructions

Mode Selection

When product is running, tap Mode Button to cycle among Rhythm Mode / Sleep Mode / Normal Mode, the corresponding indicator light lights up constant.

Mode	Description
Rhythm Mode	Select desired highest wind speed, and product will automatically alter the wind speed periodically to simulate natural outdoor breeze
Sleep Mode	Select starting wind speed with Wind Speed Button, and product will automatically lower wind speed after a period of time, and the Wind Speed Indicator Light will automatically switch accordingly <ul style="list-style-type: none">High Wind Speed Sleep Mode: 30 minutes High Wind Speed → 30 minutes Medium Wind Speed → continue in Low Wind SpeedMedium Wind Speed Sleep Mode: 30 minutes Medium Wind Speed → continue in Low Wind SpeedLow Wind Speed Sleep Mode: product runs continuously in Low Wind Speed
Normal Mode	Select wind speed, and product runs continuously in selected wind speed

Grille Rotation Function

1. When product is running, tap Grill Rotation Button to turn on grille rotation, and grille will rotate 360° to automatically disperse the wind in all directions.
2. Tap Grille Rotation Button once again to turn off grille rotation

Cool Mode

1. When product is running, tap Cool Button to turn on Cool Function, and water pump starts to operate.
2. Tap Cool Button once again to turn off Cool Function, and water pump stops operation.

Water Tank Empty Alert

In Cool Mode, if product detects the water tank is empty, the water pump will stop working, Cool Function Indicator Light will blink, buzzer will beep 10 times, and Cool Function will stop operating. Please refill water tank immediately.

Setting Off-Timer

1. When product is running, tap Timer Button to turn on Timer Function. Timer Indicator Light lights up constant.
2. Tap Timer Button repeatedly to adjust timer from 1-8 hours.
3. When product does not receive any further command, it will automatically confirm switch off time, product will start countdown, and when countdown hits zero, product will automatically turn off.

Operation Instructions

Turn Off Indicator Lights

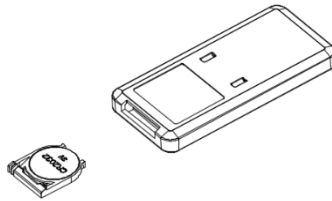
1. When product is running, long-tap Grille Rotation Button for 3 seconds, and all indicator lights will go dark.
2. Tap any button and indicator lights will light up again.

Using The Remote Control

Note:

Functions on the remote control and the control panel are the same.

1. Open the battery cover at the bottom of the remote control, insert one 3V CR2032 coin battery, and the remote control is ready for use. To open the battery cover: press the buckle on the battery cover inward and pull it out.
2. When changing the battery, observe the polarity of the battery. After inserting a new battery, reinsert the battery cover and the remote control is ready for use.



⚠ WARNING!

This product contains a coin / button cell battery. If the coin / button cell battery is swallowed, it can cause severe internal burns in just 2 hours and can lead to death.

Note:

- The remote control should be pointed directly at the signal receiver on the display panel to maximize remote control reception.
- If remote control is placed close to the product but still yield no response, please change the battery.
- This product may respond to the remote control of other devices, and other products may respond to this remote control. This is due to overlapping frequencies of the remote controls. There is no quality problem in the product itself. To avoid interference, keep this remote control away from other electrical devices during operation.
- The On/Off button on the remote control does not completely disconnect the power supply to this product. If product will be unused for a prolonged period of time, please unplug the power cord from the socket.
- DO NOT allow children to play with the remote control.

Cleaning & Maintenance

WARNING!

Turn off the product, unplug from the power source and let product cool down completely before cleaning and maintenance. DO NOT use chemicals to clean this product.

Cleaning The Product Surface

1. Use a moist cloth to wipe off dust on the surface of the product. DO NOT wash the fan unit with water.
2. For stubborn stains, wipe with cloth moistened with neutral cleanser diluted with water of 50 °C or below, then wipe dry with a dry cloth.
3. DO NOT use gasoline, dilutant, thinner or other cleansers that may damage the surface material to clean the product, and DO NOT use corrosive cleansers or solvents to clean the product.
4. Before cleaning, turn off the product and unplug from the power source to avoid the possibility of electric shock.

Cleaning The Water Tank

1. Unplug product from the power source, unlock the water tank by flipping the water tank buckles outwards horizontally, and remove the fan unit.
2. Pour off the water, use cloth moistened with neutral cleanser to wipe off any grime inside the water tank, rinse clean and wipe dry.

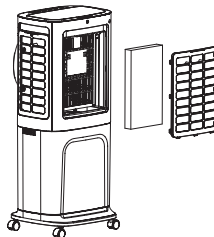
Reinstallation After Cleaning

1. Properly reassemble the fan unit and the water tank.
2. Connect to the power source, and make sure the product can function normally.

Cleaning The Filter & Water Curtain

If there is too much foreign matter adhering to the filter, it will affect the product's airflow, therefore it is recommended to clean the filter at least once every two months.

1. Pull the rear filter handle upwards to take it off, then take out the water curtain.
2. Soak the filter and water curtain in soapy water for a few minutes.
3. Rinse clean and let them air dry completely, then reinstall back onto the fan unit.



Storing The Product

1. If the product will not be used for a prolonged period of time, unplug it from the power source and wrap it up to avoid dust entering the product.
2. Before wrapping up the product, make sure the water curtain, filter and water tank are dry.

Technical Specification

Model	EFC-C1050
Voltage	220-240 V~
Frequency	50 Hz
Power	50 W
Product Dimensions	(H) 663 (W) 251 (D) 280 mm
Net Weight	4.3 kg

- Specification is subject to change without prior notice.
- If there is any inconsistency or ambiguity between the English version and the Chinese version, the Chinese version shall prevail.
- Refer to www.germanpool.com for the most update version of the user manual.

目錄

警告及注意事項	17
---------	----

產品結構	19
------	----

使用說明	20
------	----

清潔與保養	25
-------	----

技術規格	26
------	----

保用條款	27
------	----

警告及注意事項

⚠ 警告！

使用本產品前，請仔細閱讀所有說明。

- 本產品只限家居室內日常使用，如產品作任何商業、工業、出租或其他用途，保用證即告失效。
- 請勿讓兒童或身體有殘障、精神不健全及對本產品缺乏經驗或知識的人士單獨使用本產品；如需使用，必須要在負責任的成年人監管下方可使用。
- 應照顧好兒童，確保他們不會玩耍本產品。
- 無成年人監管下，勿讓兒童清潔及維護本產品。
- 使用前，請先檢查所有電壓是否與本產品標籤上的電壓相符。
- 如果電源線損壞，為免發生意外，電源線必須由廠方、廠方指定的維修中心或同等合格的技術人員進行更換。
- 清潔或檢查本產品前，必須先關機及拔掉插頭。
- 請聯繫德國寶授權的技術人員進行維修或保養本產品。

為了避免操作失誤帶來的危險及更方便使用本產品，使用本產品前，請先閱讀產品使用說明書。

1. 本產品僅用於室內使用。
2. 使用本產品，必須使用經檢查符合要求的合格電源插座，搬遷時請確認使用電壓。
3. 本產品不適合身體、感官或精神能力下降或缺乏經驗和知識的人士（包括兒童）使用，除非負責其安全的人員已就本產品使用給予監督或指導。必須監督兒童，確保他們不會玩耍本產品。
4. 8歲及以上的兒童以及身體、感官或精神能力下降或缺乏經驗和知識的人士，如果他們已就本產品的安全使用給予監督或指導，並了解所涉及的危險，則可以使用本產品。兒童不得玩耍本產品。兒童不得在無人監督的情況下進行清潔和使用後維護。
5. 如果電源線損壞，必須由德國寶客戶服務及維修中心的專業技術人員更換，以避免危險。
6. 在加水清潔過程中必須拔下本產品插頭。
7. 嚴禁用濕手觸摸電源線插頭，有觸電的危險。
8. 嚴禁拉扯電線。
9. 嚴禁折疊或將重物放置到電源線上。
10. 嚴禁將木棍、金屬棍等異物塞入進、出風口，會導致漏電、短路及本產品損壞的可能。
11. 嚴禁在本產品周圍噴灑殺蟲劑及可燃性噴霧劑，可能使本產品受損。
12. 避免將本產品出風口長時間、直接向幼兒吹風，會導致幼兒生病或影響健康的可能。
13. 使用時確保電源線插頭未黏貼異物，並將插頭完全插入。
14. 異常處理，當本產品在使用中出現異味、異音時，必須立即停止使用，並拔掉電源。
15. 機內加水後，放置或移動時嚴禁傾斜或碰撞，以防漏水。若本產品曾傾倒，且機內有水，必須立即拔下插頭，等24小時晾乾後方可開機。
16. 水箱水位嚴禁超過最高水位線，開啟製冷功能時，水泵要放在水箱裡面，水箱內不可缺水，水泵不能長時間乾燒工作，否則會損害水泵或導致其他損壞的可能。
17. 當本產品水箱內裝滿水時嚴禁以手柄將整機提起，否則水箱內的水會溢出，只能以推動來移動本產品，當確認水箱內沒有水或很少水時才可以手柄將整機提起。
18. 開啟製冷功能時，嚴禁拆除過濾網及水簾組件，會導致出風口有水珠噴出。

警告及注意事項

19. 外出或長時間不使用本產品時，必須關機，並將電源線插頭從插座中拔出。
20. 若本產品故障，必須聯絡德國寶客戶服務及維修中心，嚴禁擅自拆卸、更換零件。隨意拆卸，改造都會影響本產品的安全性。
21. 嚴禁吞食電池，有化學灼傷危險。
22. 本產品含有鈕扣電池。如果吞食鈕扣電池，可能在短短2小時內造成嚴重的內部灼傷，並可能導致死亡。
23. 必須將新舊電池放在兒童接觸不到的地方。
24. 如果遙控器電池盒未牢固關閉，必須停止使用本產品並放在兒童接觸不到的地方。
25. 如果您認為電池可能被吞食或放在身體的任何部位，請立即就醫。
26. 電池含有對環境有害的材料；必須在報廢設備前將其從本產品中取出，並進行安全處理。
27. 請注意，高濕度可能會促進環境中生物有機體的生長。
28. 嚴禁讓本產品周圍的區域變濕或潮濕。如果出現潮濕，請調低本產品的輸出。如果本產品輸出量無法調低，請間歇使用本產品。避免讓吸水材料（如地毯、窗簾、帷幔或桌布）受潮。
29. 本產品不使用時，嚴禁將水留在水箱內。
30. 存放前清空並清潔本產品，下次使用前請清潔本產品。
31. 頂部加水時，必須確保本產品處於關機狀態，並拔掉電源線插頭，加水時不能有水溢出加水盒表面，否則會有觸電或有短路燒壞整機及不開機的可能。
32. 關機時，水泵停止工作，頂部水箱水透過水管回流到水箱，回流中有空氣進入水管內，如果馬上再開機因水管有氣壓，水泵不能正常上水工作，需稍候片刻才再開機方能正常上水。

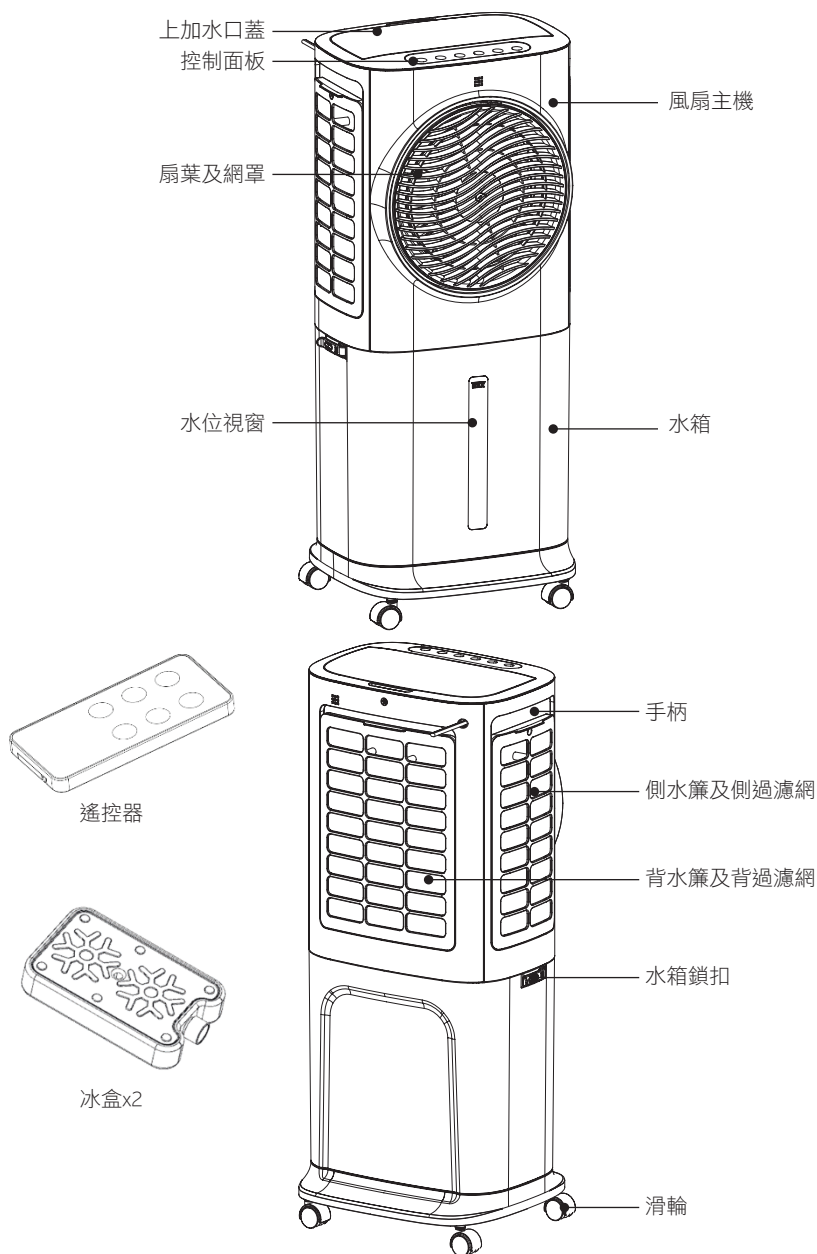
回收注意事項



棄置電器必須使用單獨收集設施，如果電器在垃圾場隨意處置，有害物質會滲透到地下水，進入食物鏈，損害您的健康和福祉。多數包裝材料為可回收材料，請通過回收站處置此材料。



產品結構



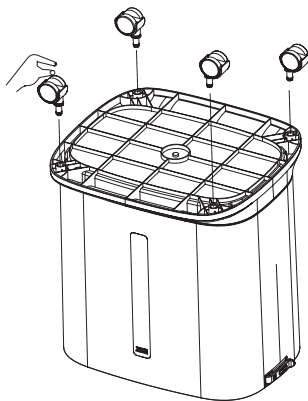
使用說明

安裝方法

將產品從包裝取出後，組裝風扇主機及水箱，確保水箱鎖扣鎖緊後方可使用。

安裝滑輪

如下圖所示安裝好腳輪便可任意移動。

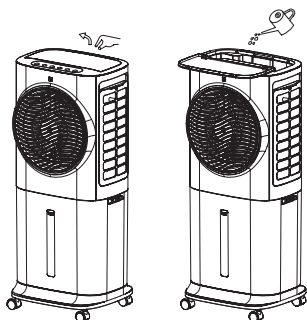


為水箱注水

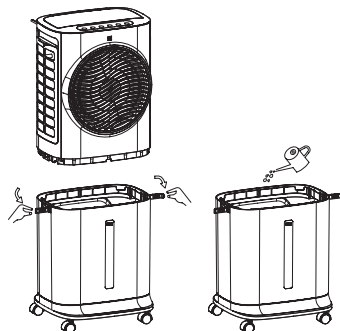
注意：

- 如需使用製冷功能，必須先將水箱注滿水，注水嚴禁超出最高水位線。
- 建議使用乾淨的自來水。
- 初次使用本產品時，若伴有輕微氣味，水箱中的水有輕微變色，均屬於正常現象，無毒無害，不會影響健康。

1. 注水前必須關機及拔除電源插頭。
2. 上加水口加水：先把上加水口蓋打開，將水慢慢注入水箱加好水之後，將上加水口蓋關上。
3. 直接往水箱加水：將水箱兩側的水箱鎖扣水平向外拉開解鎖，將風扇主機和水箱分離拆下，將水慢慢注入水箱；加好水後將風扇主機及水箱組裝好，確保水箱鎖扣鎖緊後方可使用。
4. 加水時注意水箱前方的水位視窗，注水嚴禁超出最高水位線。



上加水口加水



直接往水箱加水

使用說明

加入冰盒

跟機附送的冰盒有獨特儲冷保溫特性，能吸收水中的熱量，使水箱內的水溫低於環境溫度，讓本產品吹出來的風更涼爽。

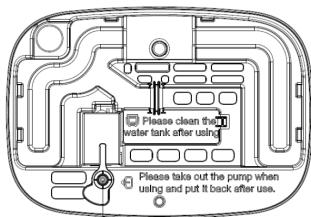
⚠ 警告！

- 嚴禁將冰盒蓋打開，嚴禁吞食。
- 使用冰盒時，必須確保水箱已注水。

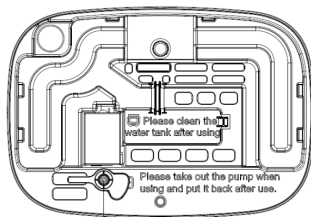
- 將冰盒放入冰箱的急凍室至冰盒內完全結冰。
- 將水箱兩側的水箱鎖扣水平向外拉開解鎖，將風扇主機和水箱分離拆下，將已結冰的冰盒放入已注水的水箱內。
- 將風扇主機及水箱組裝好，確保水箱鎖扣鎖緊後方可使用。

使用水泵

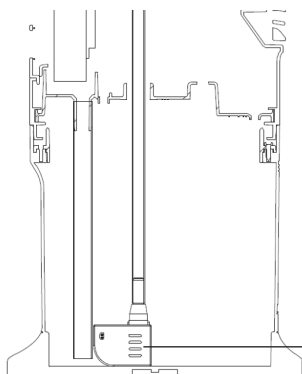
- 將風扇主機和水箱分離拆下後，將風扇主機倒放。
- 逆時針方向旋轉水泵鎖，從收納槽內取出水泵和水管（水管被扣位固定），使水泵和水管可以自然垂落到水箱底部。



水泵鎖扣



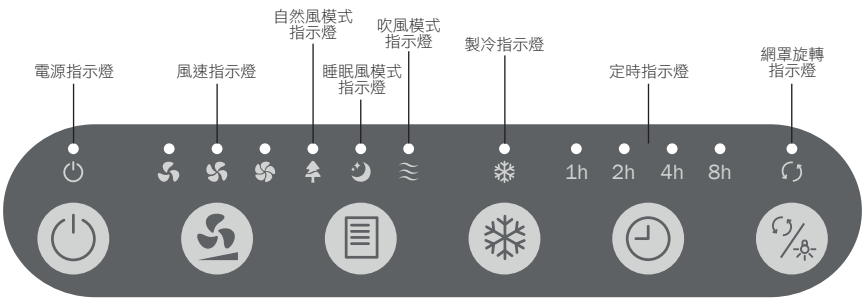
打開水泵鎖扣取出水泵



將水泵及水管放入水箱自然垂落到底部

使用說明

控制面板



遙控器



按鍵		說明
	開關鍵	按鍵開機或關機
	風速鍵	<ul style="list-style-type: none">按鍵循環調整高、中、低檔風速長按 3 秒進入乾風模式
	模式鍵	按鍵循環選擇自然風 / 睡眠風 / 吹風模式
	製冷功能鍵	按鍵開啟或關閉製冷功能
	定時鍵	<ul style="list-style-type: none">在運行狀態下按鍵啟動定時關機功能按鍵循環調整1-8小時定時關機
	網罩旋轉鍵	<ul style="list-style-type: none">按鍵開啟或關閉網罩旋轉功能長按3秒關閉所有指示燈

使用說明

開機及待機狀態

1. 接通電源後，產品發出蜂鳴器提示聲2聲，進入待機狀態。
2. 按「開關鍵」，產品預設以低風速及吹風模式檔運行，相應指示燈常亮。
3. 運行過程中，按「開關鍵」關機。

注意：

- 運行過程中，如1分鐘內無任何操作，所有指示燈變暗；此時按任意鍵指示燈變回正常亮度。
- 產品按「開關鍵」關機後，下次開機將維持關機前的運行狀態（定時、睡眠風模式及乾風模式除外）。

調節風速

運行過程中按「風速鍵」調節風速，可循環調整高、中、低檔風速。

乾風模式

此模式用於在關機前吹乾水簾，以防發霉。

運行過程中長按「風速鍵」3秒進入乾風模式，預設以高風速持續運行20分鐘，然後自動返回待機狀態。高風速指示燈閃爍及電源指示燈常亮，此模式下，製冷功能停止運行。

注意：

- 乾風模式下除「開關鍵」外所有按鍵無效。
- 再次長按「風速鍵」3秒可退出乾風模式，返回原本的運行狀態。

選擇模式

運行過程中按「模式鍵」循環選擇自然風/睡眠風/吹風模式，相應指示燈常亮。

模式	說明
自然風模式	可透過「風速鍵」調節風速，產品按預設的規律自動調節風力大小以模擬自然風
睡眠風模式	可透過「風速鍵」調節風速，產品按預設的規則定時降低風速，風速指示燈按相應風力自行切換 <ul style="list-style-type: none">• 高風速睡眠風：30分鐘高風速→30分鐘中風速→低風速持續運行• 中風速睡眠風：30分鐘中風速→低風速持續運行• 低風速睡眠風：低風速持續運行
吹風模式	產品以固定風力運行，可透過「風速鍵」調節風速

網罩旋轉功能

1. 運行過程中按「網罩旋轉鍵」，開啟網罩旋轉功能，網罩將360°自動旋轉以吹散風量。
2. 再一次「網罩旋轉鍵」關閉網罩旋轉功能。

使用說明

製冷模式

1. 運行過程中按「製冷鍵」開啟製冷功能，水泵開始運作。
2. 再一次「製冷鍵」關閉製冷功能，水泵停止運作。

缺水警報

使用製冷模式時，如偵測到水箱缺水，水泵將停止工作，製冷指示燈閃爍，蜂鳴器發出提示聲10聲，製冷功能停止。請立即加水。

設置定時關機

1. 運行過程中，按「定時鍵」設置定時功能，定時指示燈常亮。
2. 重複按「定時鍵」調整時間，可調時間為1-8小時。
3. 完成後如無任何操作，產品將自動確認定時時間，並在倒數完畢後自動關機。

關閉指示燈

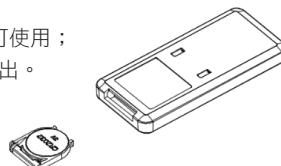
1. 運行過程中長按「網罩旋轉鍵」3秒關閉指示燈，所有指示燈熄滅。
2. 按任意鍵可再次喚醒指示燈。

使用遙控器

注意：

遙控器功能與控制面板相同。

1. 先打開遙控器後方的電池蓋，裝上3V CR2032型號的電池，即可使用；
電池蓋打開方式：按住遙控器底部的電池蓋扣位，將電池蓋拉出。
2. 更換電池請注意電池的正負極；然後電池蓋復位即可使用。



⚠ 警告！

本產品包含鈕扣電池。如果鈕扣電池被吞下，可能在2小時內造成嚴重的內部燒傷，並可能導致死亡。

注意：

- 使用遙控器操作時，需將遙控器對準遙控信號接收器，使遙控信號接收達到最好。
- 如果遙控器在離本產品很近仍然無法控制，請更換遙控器電池。
- 使用其他電器的遙控器時，本產品可能會產生反應；使用本產品的遙控器時，其他電器可能會產生反應。這是由於遙控器頻率產生重疊而發生的現象，產品本身並無品質問題，為了避免誤操作，操作時請將遙控器遠離其他電器。
- 遙控器開關鍵不能使本產品電源完全關閉，如果長時間不使用請拔除插頭。
- 嚴禁讓兒童玩耍遙控器。

清潔與保養

⚠ 警告！

清潔與保養本產品前必須關機及拔除電源插頭，並待機身完全冷卻後方可再進行清潔；嚴禁使用化學品進行清潔。

清潔機身表面

1. 外表面有灰塵時，用濕抹布擦拭乾淨即可，嚴禁直接用水沖洗。
2. 如表面太髒，可用攝氏50度以下的水和中性清潔劑混合，然後用軟布擦拭並擦乾。
3. 清潔時嚴禁使用汽油、稀釋劑、天那水及任何容易損壞外表面的物質，嚴禁使用有腐蝕性的洗滌劑或溶劑清洗。
4. 清潔前必須關掉電源開關並拔除電源插頭，否則有觸電的可能。

清潔水箱

1. 拔掉電源，將水箱鎖扣水平向外拉開解鎖，將風扇主機和水箱分離拆下。
2. 用毛巾沾少許清潔劑將水箱內的水垢擦淨，再用水清洗後將污水倒出即可。

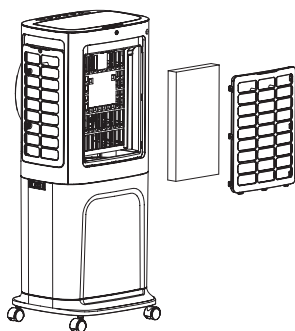
清潔後安裝使用

1. 將風扇主機及水箱組裝好，確保安裝無誤。
2. 接上電源，確認產品正常運作。

清潔過濾網及水簾

如過濾網上附著過多異物，將影響出風效果，因此建議至少每隔一個月清洗一次。

1. 上拉後過濾網手柄，將水簾取出。
2. 將過濾網及水簾用清潔劑浸泡幾分鐘。
3. 清洗曬乾後，將過濾網及水簾正確裝回原位。



收納方法

1. 如產品長期不使用時，應拔下電源插頭，包裝好產品防止灰塵進入機體。
2. 包裝前必須確保水簾及過濾網等是乾燥的，水箱內無積水。

技術規格

型號	EFC-C1050
電壓	220-240 V~
頻率	50 Hz
功率	50 W
產品尺寸	(H) 663 (W) 251 (D) 280 mm
淨重	4.3 kg

- 產品規格及設計如有變更，恕不另行通知。
- 中英文版本如有出入，一概以中文版為準。
- 本產品使用說明書以www.germanpool.com網上版為最新版本。

保用條款

Warranty Terms & Conditions

此保用提供德國寶產品之機件在正常使用下壹年保用(自購買日起計算)。

Under normal operations, the product will guarantee a 1-year full warranty provided by German Pool (effective from the date of purchase).

*貴戶須在購機十天內，以下列其中一種方式向本公司登記資料，保用手續方正式生效：

1) 填妥德國寶VIP手機應用程式保用登記表（掃描右方二維碼）

2) 填妥本公司網頁保用登記表
www.germanpool.com/warranty

3) 填妥保用卡郵寄至本公司



* This warranty is not valid until customer registration information is received by our Service Centre within 10 days of purchase via one of the following means:

1) Visit our VIP App and register online:
(Scan the QR Code on the right)

2) Visit our website and register online:
www.germanpool.com/warranty

3) Complete the attached Warranty Card and mail it back to our Customer Service Centre.



另請填妥以下表格並與正本發票一併保存，以便維修時核對資料。用戶提供之所有資料必須正確無誤，否則免費保用將會無效。 Please fill out the form below. This information and the original purchase invoice will be required for any repairs. Warranty will be invalidated if information provided is found to be inaccurate.

型號 Model No. : EFC-C1050

發票號碼 Invoice No. : _____

購買商號 Purchased From : _____

機身號碼 Serial No. : _____

購買日期 Purchase Date : _____

1. 未能出示購買發票正本者，將不獲免費維修服務。
2. 用戶應依照說明書的指示操作。本保用並不包括：
 - 上門安裝、檢驗、維修或更換零件之人工以及一切運輸費用；
 - 因天然與人為意外造成的損壞（包括運輸及其他）；
 - 電源接合不當、不依說明書而錯誤或疏忽使用本機所引致之損壞。
3. 於下列情況下，用戶之保用資格將被取消：
 - 購買發票有任何非認可之刪改；
 - 產品被用作商業或工業用途；
 - 產品經非認可之技術人員改裝或加裝任何配件；
 - 機身編號被擅自塗改、破壞或刪除。
4. 總代理有權選擇維修或更換配件或其損壞部份。
5. 產品一經被轉讓，其保用即被視作無效。

1. Customer who fails to present original purchase invoice will not be eligible for free warranty service.
2. Customer should always follow the operating instructions. This warranty does not apply to:
 - labour costs for on-site installation, check-up, repair, replacement of parts and other transportation costs;
 - damages caused by accidents of any kind (including material transfer and others);
 - operating failures resulting from applying incorrect voltage, improper usage, and unauthorized installations or repairs.
3. This warranty is invalid if:
 - the purchase invoice is modified by an unauthorized party;
 - the product is used for any commercial or industrial purposes;
 - the product is repaired or modified by unauthorized personnel, or unauthorized parts are installed;
 - the serial number is modified, damaged or removed from the product.
4. German Pool will, at its discretion, repair or replace any defective part.
5. This warranty will be void if there is any transfer of ownership from the original purchaser.

客戶服務及維修中心

中國香港

九龍大業街59號

三湘九龍灣貨運中心地下B室

電話：+852 2773 2888

傳真：+852 2356 9798

電郵：repairs@germanpool.com

中國澳門

澳門青洲大馬路（青洲新路）

515號美居廣場第二期1樓A座

電話：+853 2875 2699

傳真：+853 2875 2661

Customer Service & Repair Centre

Hong Kong, China

Unit B, G/F, Sunshine Kowloon Bay

Cargo Centre, 59 Tai Yip Street,

Kowloon, Hong Kong

Tel : +852 2773 2888

Fax : +852 2356 9798

Email : repairs@germanpool.com

Macau, China

A, 1 Andar, Mei Kui Kuong

Cheong Faze 2, No.515 Avenida

Do Conselheiro Borja Macau

Tel : +853 2875 2699

Fax : +853 2875 2661

此保用只適用於香港及澳門

This warranty is valid only in Hong Kong and Macau

German Pool (Hong Kong) Limited



香港《S MARK》
安全認證



中國電器/家電行業
十大影響力品牌

CEO

CEO非凡品牌大賞



香港優質商號



香港工商業獎



2007
最具潛質
創建品牌企業獎



香港中小企業
最佳拍檔大獎



香港消費者推崇品牌



香港《Q MARK》
優質服務證書



香港名牌十年成就獎
HONG KONG TOP BRAND TEN YEAR
ACHIEVEMENT AWARD

© All rights reserved. Copying, reproducing or using the contents of this manual is not allowed without prior authorization from German Pool, violators will be prosecuted.