

DC Inverter Multi-Oscillation Fan | EFF-814



Online Warranty Registration



Please read these instructions and warranty information carefully before use and keep them handy for future reference.

USER MANUAL

Table of Contents

Warnings & Safety Precautions	03
Product Structure	05
Installation Instructions	06
Operation Instructions	07
Cleaning & Maintenance	10
Troubleshooting	10
Technical Specification	11
Warranty Terms & Conditions	19

Warnings & Safety Precautions

WARNING!

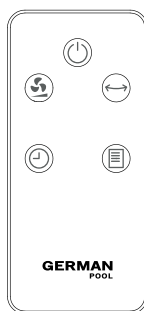
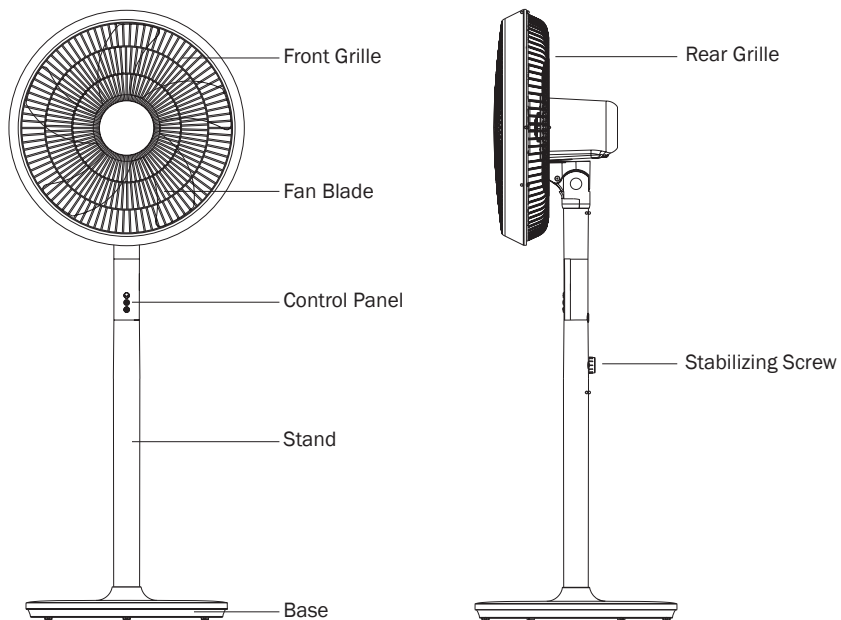
Read all instructions carefully before using this product.

- This product is for domestic indoor use only. If this product is used for any commercial, industrial, rental or other purposes, product warranty will be VOIDED.
 - This product is not intended for use by children or persons with reduced physical, sensory or mental capabilities, or lack of experience and knowledge, unless they have been given supervision or instruction concerning use of this product by an adult responsible for their safety.
 - Mind your children and DO NOT let children play with this product.
 - Cleaning and user maintenance shall not be made by children without supervision.
 - Check the voltage indicated on the rating label before using this product.
 - If the supply cord is damaged, it must be replaced by the manufacturer, its service agent or similarly qualified persons in order to avoid hazards.
 - Unplug this product from the power source before cleaning and maintenance.
 - Contact German Pool authorized service technician for repair or maintenance of this product.
-
1. This product must be used together with the original power adaptor provided. Before using this product, make sure the input voltage is within the voltage range specified by the adaptor.
 2. DO NOT disassemble the internal components of the fan by yourself. In case of malfunction, contact German Pool Customer Service & Repair Centre for repairs.
 3. If there are any technical improvements to this product in the future, no separate notification will be provided.
 4. If there are any changes to the product's appearance or color, please refer to the actual item for accuracy.
 5. This product has a strong wind power, and it is not recommended for babies or elderlies to be exposed to direct airflow for an extended period of time.
 6. If the power cord is damaged, to prevent danger, it must be replaced with a specified cord and by professional technicians from German Pool Customer Service & Repair Centre.
 7. This product is not intended for use by invalids or persons with reduced physical, sensory or mental capabilities (including children), unless they are supervised by an adult person responsible for their safety.
 8. Make sure to keep this product out of reach of small children, and children must be given proper instructions so as to avoid them treating this product as a toy.
 9. To avoid electric shock, DO NOT allow any part of this product to come into contact with water.
 10. DO NOT block the air inlet/air outlet with any object.
 11. This product can only be used in an environment within 0-40°C. DO NOT place this product in bathrooms, humid or hot locations to avoid damaging this product.
 12. This product must be kept far away from curtains, door drapes or other soft objects to avoid them being entangled into this product.
 13. If this product will not be used for a prolonged period of time, unplug the power plug from the power socket to avoid this product being kept in a standby state for too long. This helps to prolong the product's lifespan and avoid any potential accidents or hazards.

Warnings & Safety Precautions

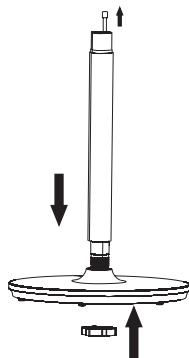
14. DO NOT insert fingers or any body parts or foreign objects into the air inlet/air outlet to avoid accidents or damaging this product.
15. DO NOT drape wet towels or wet clothes on this product to prevent electric leakage and electrocution.
16. When removing the protective casing for cleaning purposes, DO NOT touch the buttons to prevent accidentally activating the product.
17. Replaced batteries must be disposed of at designated battery recycling locations. DO NOT dispose old batteries into the trash bin.

Product Structure

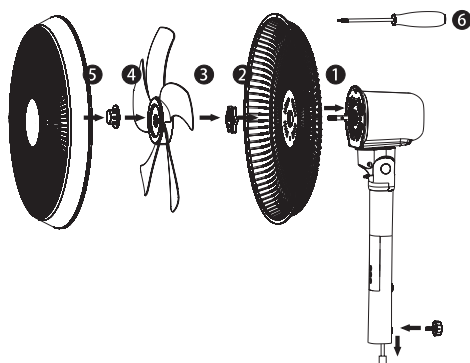


Remote Control

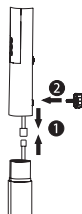
Installation Instructions



1. Insert the stand onto the base, and twist the nut clockwise to secure it to the base. (Please lift the base to make sure it is secure in order to avoid accidents.)



2. Correctly install the rear grille, fan blade, bolts and front grille according to the steps shown in the diagram above.



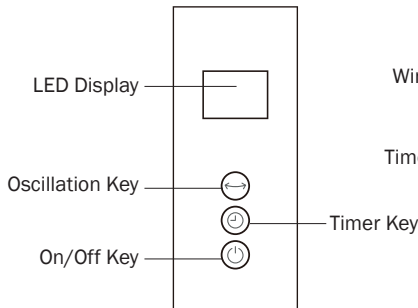
3. Connect the wire from the upper part of the fan to the wire on the stand. Then, insert the upper part of the fan correctly onto the stand and tighten the screw. (Make sure the screw is tightened to avoid accidents.)

Operation Instructions

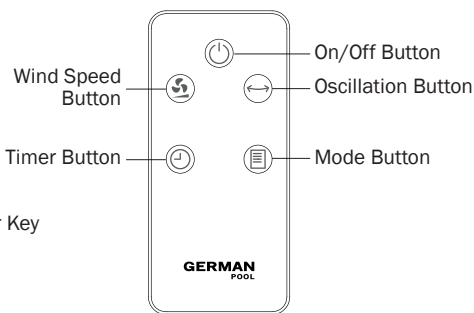
Precautions Before Use

- After all the parts of the fan has been properly installed, place the fan on a level and sturdy surface.
- Plug the power adaptor into the fan's power port, then plug the power adaptor into the power socket.

Control Panel



Remote Control



Key		Function
	On/Off Key	Tap key to turn fan on or off
	Wind Speed Key	Tap key to cycle among wind speed levels 1-8
	Mode Key	Tap key to cycle among Sleep Mode / Rhythm Mode / Normal Mode
	Timer Key	<ul style="list-style-type: none">• When fan is turned on, tap key to activate Off-Timer Function• Tap key to cycle among timer duration of 1-8 hours
	Oscillation Key	Tap key to turn horizontal oscillation on or off

Note:

Functions on the remote control and control panel are the same.

Turn On & Standby State

1. Connect product to the power source, control panel lights up for 1 second then display shows "00.", and product enters standby state.
2. Tap On/Off Key, product starts to run at wind speed level 1 by default, LED display shows "1" for 10 seconds, then returns to showing "00."
3. When fan is running, tap On/Off Key to turn off the fan.

Note:

On/Off Key does not completely disconnect electrical supply to the product. If product will not be used for a prolonged period of time, please unplug the power cord.

Operation Instructions

Adjusting Wind Speed Level

When fan is running, tap Wind Speed Button to adjust wind speed level, the maximum level is 8, the minimum level is 1.

Note:

In Sleep Mode or Rhythm Mode, tapping Wind Speed Key will exit the current mode and return to Normal Mode.

Mode Selection

When fan is running, tap Mode Key to cycle among Sleep Mode / Rhythm Mode / Normal Mode.

Mode	Description
Sleep Mode	LED display shows "SL", and fan runs in the lowest wind speed level
Rhythm Mode	LED display shows "NA", and fan will automatically adjust wind speed continuously to mimic natural breeze
Normal Mode	LED display shows current wind speed level; user can tap Wind Speed Key to adjust wind speed level

Oscillation Function

1. When fan is running, tap Oscillation Key to start oscillation.
2. Tap Oscillation Key again to stop oscillation.

Setting Off-Timer

1. When fan is running, tap Timer Key to set off-timer, LED display shows "OH".
2. Tap Timer Key repeatedly to adjust timer duration from 1-8 hours.
3. If product does not receive any new command in 8 seconds, it will automatically confirm the timer, and LED display shows "00." Timer will start to countdown, and when countdown reaches zero, the product will automatically turn off.

Note:

To cancel timer, tap Timer Key repeatedly until LED display shows "OH".

Using The Remote Control

Note:

- Before initial use, pull out the insulating material from the battery box.
- When the remote control is placed close to the fan but it doesn't function, it indicates that it's time to change the battery.
- Improper installation of the battery will lead to battery leakage and corrosion, and damage the remote control.

Operation Instructions

Please observe the following instructions:

1. When changing the battery, always replace with a brand new battery.
2. DO NOT retrofit, short circuit or disassemble the battery to avoid danger.
3. When placing in a new battery, make sure the polarity of the battery is correct.
4. If the remote control will not be used for a prolonged period of time, please remove the battery to avoid battery leakage.
5. When disposing of batteries, please place them in government-designated recycling bins or collection points to prevent environmental pollution.

⚠ WARNING!

This product contains a coin / button cell battery. If the coin / button cell battery is swallowed, it can cause severe internal burns in just 2 hours and can lead to death. Keep new and used batteries away from children.

Note:

1. The remote control should be pointed directly at the signal receiver on the display panel to maximize remote control reception.
2. This product may respond to the remote control of other devices.
3. Other products may respond to this Remote control. this is due to overlapping frequencies of the remote controls. there is no quality problem in the product itself. to avoid interference, keep this remote control away from other electrical devices during operation.
4. The On/Off button on the remote control does not completely disconnect the power supply to this product. If product will be unused for a prolonged period of time, please unplug the power cord from the socket.

Cleaning & Maintenance

WARNING!

Turn off the product, unplug from the power source and let product cool down completely before cleaning and maintenance.

1. To avoid accidents, DO NOT attempt to clean the product until the fan blade has completely stopped rotating.
2. DO NOT immerse or rinse the power cord and main unit in water. DO NOT wet the interior parts of the fan.
3. DO NOT use cleaning agents, steel scouring pad, gasoline, alcohol, vinegar or other volatile corrosive liquids to clean this product in order to avoid damaging the product.
4. Please use a wringed cloth to clean the surface of the fan.
5. After cleaning, wait until the product has completely air-dried before connecting to the power source.
6. If this product will not be used in a prolonged period of time, place the product back into its original packing box, and store in a cool, dry and safe place away from sunlight.

Troubleshooting

WARNING!

In case of malfunction, stop using this product immediately and unplug it from the power source. Continuing to use this product in a faulty state or attempting to repair this product by yourself can lead to grave danger.

The following phenomenon may not be due to product malfunction. Please check before sending the product off to repair:

Common Problem	Possible Cause	Solution
Fan doesn't work	Power plug not properly plugged in	Properly plug in the power plug
	Fan not turned on	Tap On/Off Key to turn on fan
Abnormal noise during operation	Fan blade cracked	Contact German Pool Customer Service & Repair Centre
	Motor damaged	Contact German Pool Customer Service & Repair Centre

WARNING!

If problem persists or if other problems occur, turn off the product and unplug from the power source immediately, and contact German Pool Customer Service & Repair Centre immediately. DO NOT disassemble or repair this product by yourself.

Technical Specification

Model	EFF-814
Voltage	DC12V
Power	24 W
Product Dimensions	(H) 1150 (W) 410 (D) 370 mm
Net Weight	2.5 kg

- Specification is subject to change without prior notice.
- If there is any inconsistency or ambiguity between the English version and the Chinese version, the Chinese version shall prevail.
- Refer to www.germanpool.com for the most update version of the user manual.

目錄

警告及注意事項	13
---------	----

產品結構	14
------	----

安裝說明	15
------	----

使用說明	16
------	----

清潔與保養	18
-------	----

故障檢修	18
------	----

技術規格	18
------	----

保用條款	19
------	----

警告及注意事項

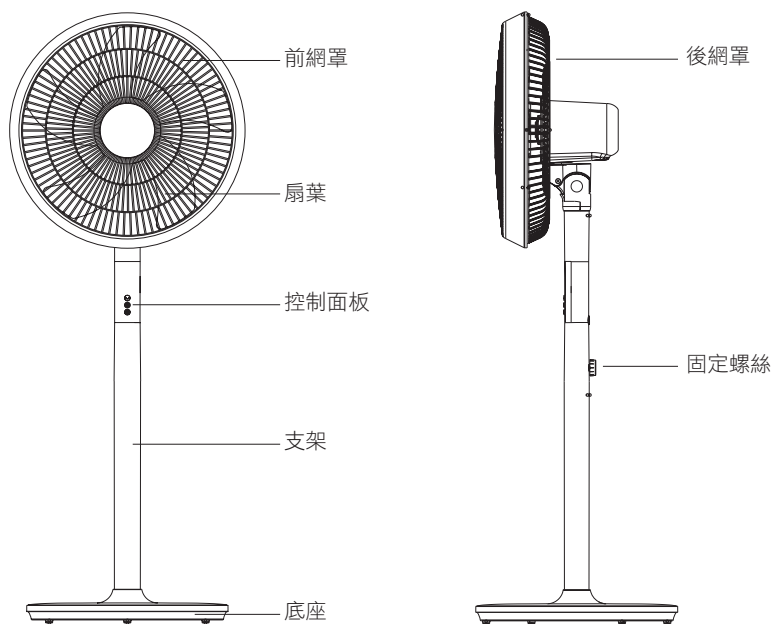
⚠ 警告！

使用本產品前，請仔細閱讀所有說明。

- 本產品只限家居室內日常使用，如產品作任何商業、工業、出租或其他用途，保用證即告失效。
- 請勿讓兒童或身體有殘障、精神不健全及對本產品缺乏經驗或知識的人士單獨使用本產品；如需使用，必須要在負責任的成年人監管下方可使用。
- 應照顧好兒童，確保他們不會玩耍本產品。
- 無成年人監管下，勿讓兒童清潔及維護本產品。
- 使用前，請先檢查所有電壓是否與本產品標籤上的電壓相符。
- 如果電源線損壞，為免發生意外，電源線必須由廠方、廠方指定的維修中心或同等合格的技術人員進行更換。
- 清潔或檢查本產品前，必須先關機及拔掉插頭。
- 請聯繫德國寶授權的技術人員進行維修或保養本產品。

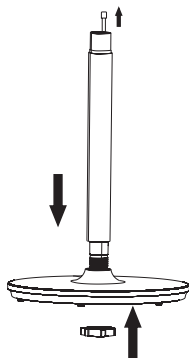
1. 必須使用產品配套的電源適配器，使用前必須確保輸入電壓在適配器要求的使用電壓範圍內。
2. 使用者嚴禁隨意拆卸風扇內部零部件，如有故障，必須與德國寶客戶服務及維修中心聯繫，以進行維修。
3. 若本產品日後有技術改進，恕不另行通知。
4. 產品外觀，顏色若有改動，請以實物為準。
5. 本產品風力較強，嬰兒、老人不宜長時間直吹。
6. 如電源軟線損壞，必須由德國寶客戶服務及維修中心的專業人員以專用元件更換。
7. 小孩、喪失生活自理能力的老人或病人必須在成人監護下使用本產品，以防發生意外。
8. 本產品必須放置於幼兒無法觸及的地方，並正確教導幼兒，避免他們誤將本產品視為玩具。
9. 為避免觸電，本產品任何部件均不能與水接觸。
10. 嚴禁任何物件阻隔進/出風口。
11. 必須在0-40°C 內的環境下使用本產品，嚴禁把本產品放在浴室、潮濕及非常高溫的地方，以免損壞本產品。
12. 本產品必須遠離窗簾、門簾等柔軟物件，以免捲入本產品內；
13. 長時間不使用本產品的時候，必須拔除電源插頭，以免產品長時間處於備用狀態下，縮短產品壽命及造成意外或危險。
14. 嚴禁將手指及其他身體部位或雜物放入進/出風口，以免造成傷害及損壞本產品。
15. 嚴禁將濕毛巾、濕抹布隨手放在本產品上，避免造成漏電及發生觸電意外。
16. 拆下防護外殼清潔時嚴禁觸碰按鍵，以免產品運轉發生意外。
17. 必須將更換下來的電池放到指定的電池回收位置，嚴禁把電池丟到垃圾桶。

產品結構

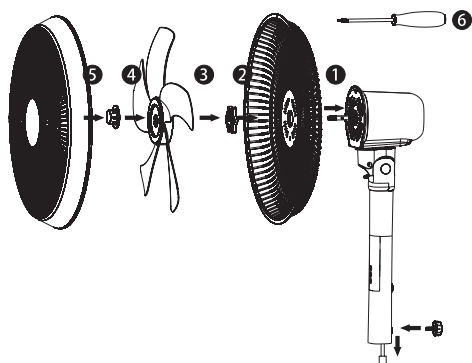


遙控器

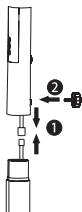
安裝說明



1. 將支架安裝至底座，將螺母順時針擰緊固定（抬起底座確認是否擰緊，以免發生意外）。



2. 按照順序將後網罩、扇葉、前網罩及螺母正確組裝。



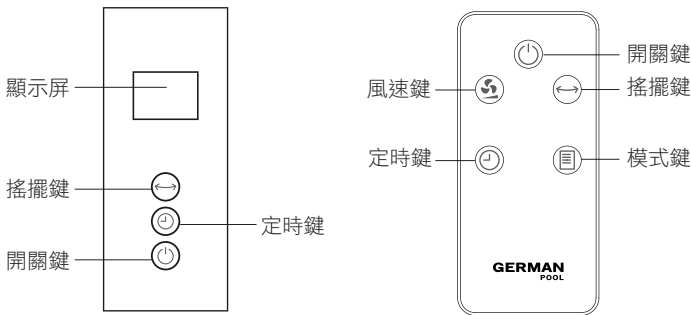
3. 將組裝好風扇上半部份的引線與支架上的引線對插，並將風扇上半部份正確插入支架之中，然後擰緊螺母。（必須確認已擰緊，以免發生意外）。

使用說明

使用前注意事項

- 按照安裝要求組裝好風扇各部件後，將風扇放置於平穩的地面。
- 將電源適配器插入機身的電源接口，再將電源適配器插入電源插座。

控制面板



按鍵		說明
	開關鍵	按鍵開機或關機
	風速鍵	按鍵循環調校1-8檔風速
	模式鍵	按鍵循環切換睡眠 / 自然風 / 吹風模式
	定時鍵	<ul style="list-style-type: none">在運行狀態下按鍵啟動定時關機功能按鍵循環調校1-8小時定時時間
	左右搖擺鍵	按鍵開啟或關閉左右搖擺

注意：

遙控器及控制面板按鍵的功能相同。

開機及待機狀態

- 接通電源後，顯示屏亮起1秒，然後顯示「00.」進入待機狀態。
- 按「開關鍵」，產品預設以1檔運行，顯示屏閃爍顯示「1」，10秒後變回顯示「00.」。
- 運行過程中，按「開關鍵」關機。

注意：

開關鍵不能使本產品電源完全關閉，如果長時間不使用，請拔除插頭。

調節風速

運行過程中按「風速鍵」調節風速，最高為8檔，最低為1檔。

注意：

在睡眠模式、自然風模式下按「風速鍵」將退出相應模式並返回吹風模式。

使用說明

選擇模式

運行過程中按「模式鍵」循環選擇睡眠/自然風/吹風模式。

模式	說明
睡眠模式	顯示屏顯示「SL」，風扇以最低檔運行
自然風模式	顯示屏顯示「NA」，風扇會自動調節風力大小以模擬自然風
吹風模式	顯示屏顯示風速檔位，可透過「風速鍵」調節風速

左右搖擺功能

1. 運行過程中按「左右搖擺鍵」，開啟左右搖擺功能。
2. 再按一次「左右搖擺鍵」，關閉左右搖擺功能。

設置定時關機

1. 運行過程中，按「定時鍵」設置定時功能，顯示屏顯示「0H」。
2. 重複按「定時鍵」調整時間，可調時間為1-8小時。
3. 如8秒內無任何操作，產品將自動確認定時時間，顯示屏顯示「00.」，並在倒數完畢後自動關機。

注意：

如需取消定時，重複按「定時鍵」直至時間顯示為「0H」即可。

使用遙控器

注意：

- 使用遙控器前，必須先將電池盒上的絕緣體抽出。
- 如遙控器在距離機身很近仍無法使用時，請更換電池。
- 如錯誤安裝電池將造成漏電與腐蝕，導致遙控器損壞。

使用時請遵從以下說明：

1. 更換電池時，必須使用全新的電池。
2. 嚴禁嘗試更改、短路、分解電池，以免發生危險。
3. 必須依照電池盒上的「+-」極指示安裝電池。
4. 長期不使用遙控器時，必須取出電池，避免造漏電。
5. 請將廢棄電池進行回收；當電池廢棄時請放置到政府指定的回收站，避免污染環境。

⚠ 警告！

本產品包含鈕扣電池。如果鈕扣電池被吞下，可能在2小時內造成嚴重的內部燒傷，並可能導致死亡。

注意：

1. 使用遙控器操作時，需將遙控器對準遙控信號接收器，使遙控信號接收達到最好。
2. 使用其他電器的遙控器時，本產品可能會產生反應。
3. 使用本產品的遙控器時，其他電器可能會產生反應。這是由於遙控器的頻率產生重疊而發生的現象，產品本身並無品質問題，為了避免誤操作，操作時請將遙控器遠離其他電器。
4. 遙控器的開關鍵不能使本產品電源完全關閉，如果長時間不使用，請拔除插頭。

清潔與保養

⚠ 警告！

清潔與保養本產品前必須關閉本產品並拔除電源插頭，再進行清潔。

1. 必須待風扇完全停止運轉後，才能進行清潔，以免受傷。
2. 嚴禁將電源線或主機浸在水中清洗或在水龍頭下沖洗，風扇內部零件嚴禁沾水。
3. 嚴禁使用清潔劑、鋼絲刷、汽油、酒精、醋或其他揮發腐蝕性液體清潔本產品，以免損壞。
4. 風扇表面請使用微濕的布進行清潔。
5. 清潔完畢後必須待產品完全乾燥後，才可連接電源使用。
6. 如長時間不使用本產品，必須將產品收藏回包裝盒內，並放置在乾燥陰涼且安全的地方。

故障檢修

⚠ 警告！

如本產品發生故障，必須立即停止使用，並將電源插頭拔除。在故障狀態下繼續使用或自行修理，均可能發生危險。

如出現下列狀況可能並非故障，在送修前請先進行檢查。

常見故障	可能原因	解決方法
產品不運作	電源插頭未確實插入電源插座	將電源插頭正確插入電源插座
	未正確開機	按「開關鍵」開機
運行時發出異響	扇葉裂開	聯絡德國寶客戶服務及維修中心
	摩打損壞	聯絡德國寶客戶服務及維修中心

⚠ 警告！

如問題持續，必須立即拔除電源插頭，並與德國寶客戶服務及維修中心聯絡，嚴禁自行拆卸維修或更換零件。

技術規格

型號	EFF-814
電壓	DC12V
功率	24 W
產品尺寸	(H) 1150 (W) 410 (D) 370 mm
淨重	2.5 kg

- 產品規格及設計如有變更，恕不另行通知。
- 中英文版本如有出入，一概以中文版為準。
- 本產品使用說明書以www.germanpool.com網上版為最新版本。

保用條款

Warranty Terms & Conditions

此保用提供德國寶產品之機件在正常使用下壹年保用(自購買日起計算)。

Under normal operations, the product will guarantee a 1-year full warranty provided by German Pool (effective from the date of purchase).

*貴戶須在購機十天內，以下列其中一種方式向本公司登記資料，保用手續方正式生效：

1) 填妥德國寶VIP手機應用程式
保用登記表(掃描右方二維碼)

2) 填妥本公司網頁保用登記表
www.germanpool.com/warranty

3) 填妥保用卡郵寄至本公司



* This warranty is not valid until customer registration information is received by our Service Centre within 10 days of purchase via one of the following means:

1) Visit our VIP App and register online:
(Scan the QR Code on the right)

2) Visit our website and register online:
www.germanpool.com/warranty

3) Complete the attached Warranty Card and mail it back to our Customer Service Centre.



另請填妥以下表格並與正本發票一併保存，以便維修時核對資料。用戶提供之所有資料必須正確無誤，否則免費保用將會無效。 Please fill out the form below. This information and the original purchase invoice will be required for any repairs. Warranty will be invalidated if information provided is found to be inaccurate.

型號 Model No. : EFF-814

機身號碼 Serial No. : _____

購買商號 Purchased From : _____

發票號碼 Invoice No. : _____

購買日期 Purchase Date : _____

1. 未能出示購買發票正本者，將不獲免費維修服務。
2. 用戶應依照說明書的指示操作。本保用並不包括：
 - 上門安裝、檢驗、維修或更換零件之人工以及一切運輸費用；
 - 因天然與人為意外造成的損壞(包括運輸及其他)；
 - 電源接合不當、不依說明書而錯誤或疏忽使用本機所引致之損壞。
3. 於下列情況下，用戶之保用資格將被取消：
 - 購買發票有任何非認可之刪改；
 - 產品被用作商業或工業用途；
 - 產品經非認可之技術人員改裝或加裝任何配件；
 - 機身編號被擅自塗改、破壞或刪除。
4. 總代理有權選擇維修或更換配件或其損壞部份。
5. 產品一經被轉讓，其保用即被視作無效。

1. Customer who fails to present original purchase invoice will not be eligible for free warranty service.
2. Customer should always follow the operating instructions. This warranty does not apply to:
 - labour costs for on-site installation, check-up, repair, replacement of parts and other transportation costs;
 - damages caused by accidents of any kind (including material transfer and others);
 - operating failures resulting from applying incorrect voltage, improper usage, and unauthorized installations or repairs.
3. This warranty is invalid if:
 - the purchase invoice is modified by an unauthorized party;
 - the product is used for any commercial or industrial purposes;
 - the product is repaired or modified by unauthorized personnel, or unauthorized parts are installed;
 - the serial number is modified, damaged or removed from the product.
4. German Pool will, at its discretion, repair or replace any defective part.
5. This warranty will be void if there is any transfer of ownership from the original purchaser.

客戶服務及維修中心

香港

九龍大業街59號

三湘九龍灣貨運中心地下B室

電話：+852 2773 2888

傳真：+852 2356 9798

電郵：repairs@germanpool.com

澳門

澳門青洲大馬路(青洲新路)

515號美居廣場第二期1樓A座

電話：+853 2875 2699

傳真：+853 2875 2661

Customer Service & Repair Centre

Hong Kong

Unit B, G/F, Sunshine Kowloon Bay

Cargo Centre, 59 Tai Yip Street,

Kowloon, Hong Kong

Tel: +852 2773 2888

Fax: +852 2356 9798

Email: repairs@germanpool.com

Macau

A, 1 Andar, Mei Kui Kuong

Cheong Faze 2, No.515 Avenida

Do Conselheiro Borja Macau

Tel: +853 2875 2699

Fax: +853 2875 2661

此保用只適用於香港及澳門

This warranty is valid only in Hong Kong and Macau

German Pool (Hong Kong) Limited



香港《S MARK》
安全認證



中國電器/家電行業
十大影響力品牌

CEO

CEO非凡品牌大賞



香港優質商號



香港工商業獎



2007
最具潛質
創建品牌企業獎



香港中小企業
最佳拍檔大獎



香港消費者推崇品牌



香港《Q標》
優質服務證書



香港名牌十年成就獎
HONG KONG TOP BRAND TEN YEAR
ACHIEVEMENT AWARD

© All rights reserved. Copying, reproducing or using the contents of this manual is not allowed without prior authorization from German Pool, violators will be prosecuted.